

## CHARACTERISTICS

- Flow rate: 250 cm<sup>3</sup>/min;
- Pressure: max. 100 bar;
- Motor: Three-phase 220/380V – 50 Hz;
- Reservoir:  
6 litres made of sheet steel with a visual level indicator;
- Pressure gauge:  
Scale 0 + 120 bar for reporting line pressure.
- Line inverter:
- Hydraulic-type with overpressure system.
- It automatically reverses the lines to reach the set pressure configured for its valves

## SERIES 1222000 ELECTRONIC GEAR PUMP FOR OIL

### For dual-line lubrication systems

These lubrication units have been designed and constructed for the purpose of providing a compact and efficient control unit for the feeding dual-line oil systems and verifying that they are properly functioning.

The unit is composed of one gear pump with a flow rate of 250 cm<sup>3</sup> per minute driven by a three-phase electric motor, a sheet-metal reservoir with a capacity of three litres, a hydraulic inverter, a pressure gauge that indicates the pressure gauge in the line connected to the pump.

The pressure gauge also has the function of indicating the instant in which the reversal of the lines takes place.

The hydraulic inverter automatically ensures that the two lubrication lines are alternately fed.

An ulterior guarantee for safe functioning of the system is provided by electrically controlling the minimum level of the reservoir achieved by means of a reed contact.

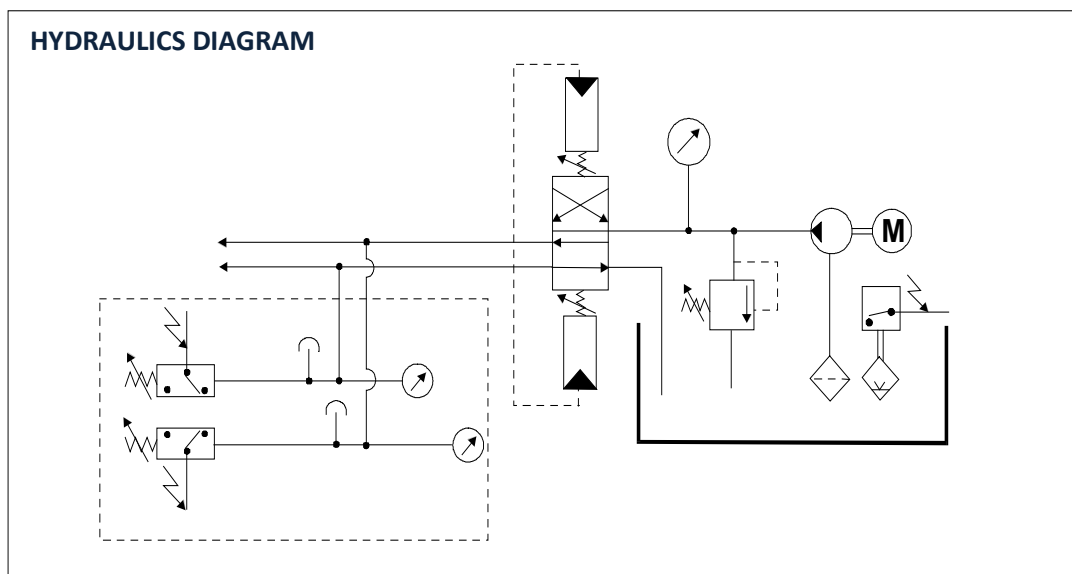
A pressure switch, which is only provided for the version with the code 1222070, controls the regular operation of the system, sending a signal to an electronic apparatus (available on request) that the line pressure has reached the set value configured on the same pressure switch.



## APPLICATIONS

- Feeding and controlling dual-line oil systems

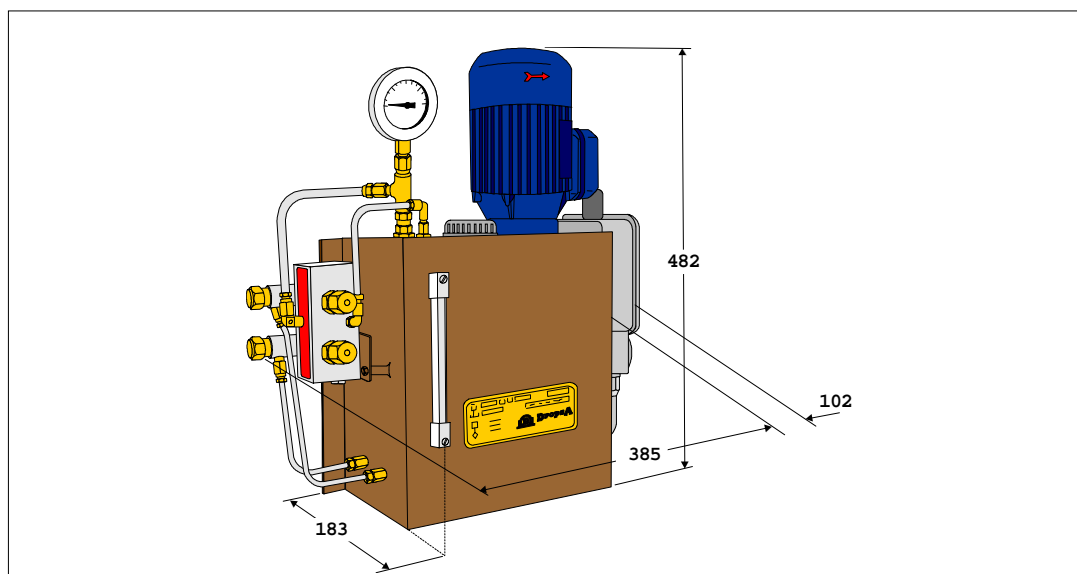
### HYDRAULICS DIAGRAM



## TECHNICAL INFORMATION

TECHNICAL INFORMATION	
Flow rate	250 cm <sup>3</sup> /min (a 1500 rpm)
Max. operating pressure:	100 bar (10 MPa)
Lubricant	Oil with a viscosity of 15÷1000 cSt at the fluid's operating temperature.
Motor	Three-phase 220/380V – 50 Hz – 0.18 kW meeting MEC standards Size 63 Protection degree IP 44 (on request IP 55) On request, to be specified during the ordering phase, other voltages, frequencies, protection degrees and motors at CSA electrical standards
Reservoir capacity	6 litres made of sheet steel complete with a pressure cap with a filter and a visual level indicator
Outlet connection lubricant	G 3/8 UNI ISO 228/1
Adjustment valve pressure	Calibration to 90 (9 MPa)
Suction filter	Filtering power 250 µ
Minimum level electrical contact	Switchable max. power 60 VA
Max. voltage:	220 V AC – 150 V DC
Max. current:	1 A
Pressure gauge	Scale 0 + 120 bar (0 + 12 MPa) for reporting line pressure.
Line inverter	Hydraulic-type with overpressure system. It automatically reverses the lines to reach the set pressure configured for its valves Adjustable from 30 to 150 bar (3÷15 MPa) Pressure setting 80 bar (8MPa)
End-of-line pressure switch	Only for control unit with code 1222070

## DIMENSIONS



## ORDER INFORMATION

DESCRIPTION	PART NUMBER
Electric pump without pressure switch - weight 17.5 kg (17.5 daN)	1222060
Electronic gear with pressure switch - weight 20 kg (20 daN)	1222070

Distributor Info: