

# VIP5: Lubrication System Controller

*Control system for small and medium size  
Lubrication Systems*

**Software Version 3.0**

## Quickstart Guide

## User Operating and Maintenance Manual

Original text translation

## Warranty Information

### CONTENT

---

1. INTRODUCTION
2. PRODUCT FEATURES
3. DESCRIPTION OF OPERATING PROCEDURES
4. FIXING AND INSTALLATION DETAILS
5. INPUTS/OUTPUTS
6. OPERATOR INTERFACE FRONT PANEL
7. OPERATING MODE
8. CYCLE MONITORING
9. SETUP PROGRAMMING
10. PROBLEMS AND SOLUTIONS
11. TECHNICAL SPECIFICATIONS
12. MAINTENANCE PROCEDURES
13. DISPOSAL PROCEDURES
14. ORDERING INFORMATION
15. MOVING AND SHIPPING
16. OPERATING PRECAUTIONS
17. WARRANTY
18. REVISIONS
19. DECLARATION OF COMPLIANCE
20. DISTRIBUTORS



# Quickstart Guide

## 10 STEPS TO SETUP YOUR VIP5 Controller

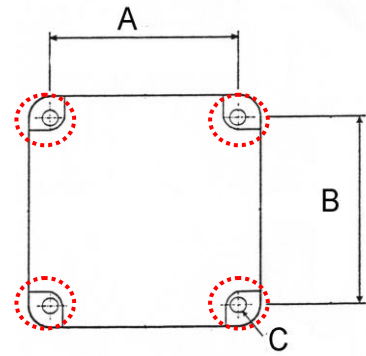


This section provides summary instruction for programming the VIP5 controller BASIC Menu and functionality. The features in the basic menu can be used to control and monitor a majority of simple TIMER BASED; PROGRESSIVE AND 33V INJECTOR lubrication systems, allowing to get your system up and operational in minimal amount of time.

## STEP 1 – Install and fix VIP5 Controller

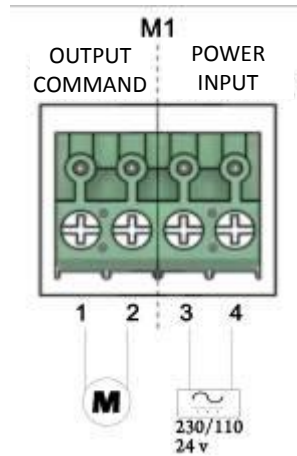
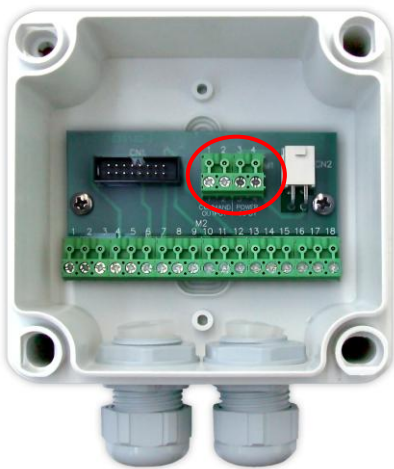
The VIP5 Controller should be fixed using the 4 fixing holes.

For further information, refer to Section 4 of this manual.



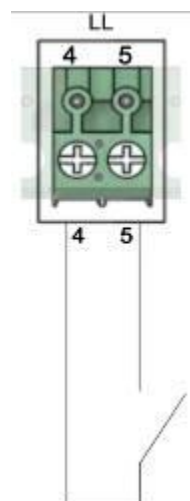
A	B	C
95 mm (3.74 in.)	95 mm (3.74 in.)	Ø 4 mm (Ø 0.16 in.)

## STEP 2 – Connect power input and pump (or control solenoid) output to the VIP5 connector strip “M1”



Further details in section 5

## STEP 3 – Connect the pump low level switch to pin 4 and 5 on connector strip “M2”

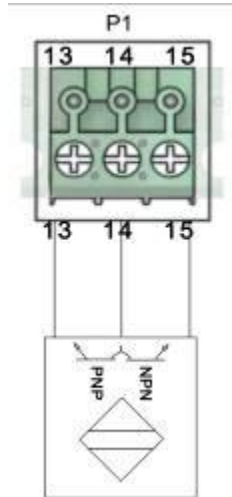


For complex connections involving 4..20mA please refer to section 5

If you do not have an end of cycle switch (the controller will operate in timer only mode) then skip to step 5

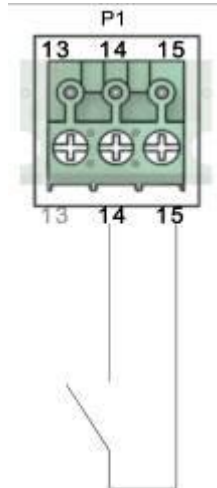
## STEP 4A

If using a Progressive System - connect the Dropsa Ultrasensor/end of cycle switch to pins 13/14/15 on connector strip "M2"



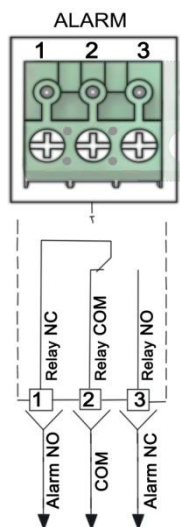
## STEP 4B

If using a 33V Injector System— connect the end of cycle pressure switch to pins 14 and 15 on connector strip "M2"



For any other system, please refer to the connection diagrams in section 5

**STEP 5** – Connect the remote alarm signal relay to your host machine to pins 1/2/3 on connector strip "M2"



## STEP 6 – You can now power on the VIP5 and enter setup programming mode



When you turn on the device, you can check the firmware version loaded: rel. 3.00



Press and hold the **MODE** key for 5 seconds to the setup programming menu



The VIP5 will display the first parameter **LUBE Type**

and the default value **SEP**

**Now configure the parameters**

## STEP 7

Select the type of system: **SEP, TIMER, PS, DUAL**



By default, the system will be configured a **SEP** Progressive controller.



To change the configuration press the **MODE** key for per 5 seconds,



and use the arrow **UP** and **DOWN** keys to select the type of system parameter.

**Select LUBE TYPE accounting to the type of system you have:**

**SEP** : select this option for PROGRESSIVE SYSTEM with the end cycle switch ( eg. Dropsa Ultrasensor). The VIP5 Controller will activate the pump and complete the cycle when the cycle switch has changeover two times (0 -> 1 -> 0, or 1 -> 0 -> 1). The pump is then switched off until the next lubrication cycle.

**DUAL** : select this option for more complex DUAL LINE SYSTEM. You should refer to the advanced setting in section 8.

**TIMER** : select this option when you have NO CYCLE SENSOR. The VIP5 Controller will activate the pup for the duration of the **LUBE TIME** . After this, the pump is switched off until next lubrication cycle.

**PS** : select this option when have a pressure switch configuration in a 33V INJECTOR SYSTEM. The VIP5 Controller will switch on the pimp and wait for pressure to be achieved. The pup is the switched off until the next lubrication cycle.



When the correct type of system is selected, press **OK** key to set the next parameter.



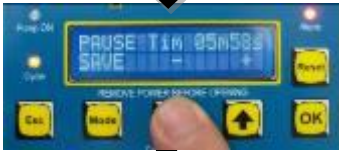
## STEP 7A

If **TIMER** mode is selected – Set the lube cycle timer value



If **TIMER** mode is selected, you must determine for how long the pump must run during each lubrication cycle. For other operation modes, the run time of the pump is automatically determined by the end of cycle monitoring switch.

Press **MODE** key to **SET** cycle time



Select **UP** and **DOWN** arrows to set the value



Press **OK** key to save the value



Press **UP** arrow ( **NEXT** function) to move onto the next parameter.

## STEP 8

Set the pause time value ( **PAUSE** timer)



The **PAUSE** timer is used to set how often the VIP5 will activate the pump and run a lubrication cycle. By default, this is set to every 6 minutes

To change the setting, press **MODE** key



Then use **UP** and **DOWN** arrows to change value.



Once, you have selected your pause time, press **OK** key to save and return to the parameter Menu



Press **UP** arrow ( **NEXT** ) to move onto the next parameter.

## STEP 9

Set pump Type – You must tell the VIP5 if you are using a continuously energized pump system or if it requires to be pulsed to work correctly.



**CONTINUOUS** : The VIP5 Controller by default, can operate both electric and reciprocating pneumatic pumps that require a continuous command output.

Example of such pumps are Dragon Series, Sumo, Cannon Pump, Smart, Piccola, Pneumatic Barrel Pumps. These are known as **CONTINUOUS** pump type.



**PULSED** : If however you are using a pump that requires a pulsed output the you must selected **PULSED**.

Examples of such systems would be a Locopump piloted by an (3/2) air solenoid valve.

To change the setting, press **MODE** button.



Then use the **UP** and **DOWN** arrows to change the value.



Once, you have selected your desired PUMP Type, press **OK** button to save and return to the Parameter Menu.

## STEP 10

Complete the Setup



At this point, the basic parameters have been set. The VIP5 Controller will ask if you wanted to set the advanced options. These allow a much more granular control of the lubrication cycle for complex systems and many more control options. You can read about the other option in section 9 of the manual.

Press **OK** button to save the setting and exit programming mode.

**Setup Completed - [The VIP5 will now start a lubrication cycle](#)**

## 1. INTRODUCTION

Thank you for purchasing the **Dropsa VIP5 – Lubrication Controller**. This is the operating and user manual for the VIP5 Controller used to control and monitor small and medium sized lubrication system such as simple on/off systems, injector systems, progressive divider systems and simple dual line systems.

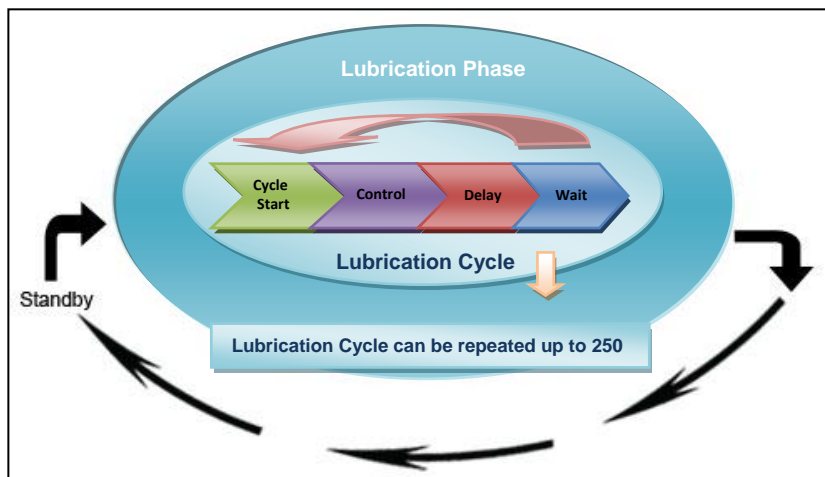
It is possible to obtain the latest documentation by visiting our website, [www.dropsa.com](http://www.dropsa.com)

This manual contains important operating and safety information for users of this product. It is essential that you carefully read this manual and conserve a copy with the product so that other users may consult it at any time.

### 1.1 DEFINITION OF LUBRICATION AND STANDBY PHASE, LUBRICATION PHASE, AND LUBRICATION CYCLE

In this manual the **LUBRICATION PHASE** and **LUBRICATION CYCLE** refer to the specific instances when the lubrication pump is operating to provide lubrication in a system.

The **LUBRICATION CYCLE** is made up of : **Cycle Start** -> **Control** of a sensor device -> **Delay** time to allow sensor device to stabilize -> **Wait** Time before another Cycle Start. This sub-cycle can be repeated as many times as required and the completion of this repetition is considered the **LUBRICATION PHASE**. Fig. 1 Illustrates this graphically.



*Fig.1 A Lubrication Phase can comprise of many Lubrication Cycles*

The **STANDBY PHASE** defines the interval between each **LUBRICATION PHASE**.



## 2. PRODUCT FEATURES

---

**VIP5** is an advanced lubrication control that offers many operating possibilities and features in a single compact package. It is an ideal product for small and medium systems as it offers considerable advantages over using a much bigger, expensive PLC system to achieve the same result. Some of the key features are:

- Three separate inputs (to monitor Dual line pressure switches, progressive cycle switch, injector pressure switch and external signals to use as a counter for standby or lubrication phase ).
- Signal Inputs can be NPN, PNP or a Clean Contact (or Namur style switching).
- Time or counter based determination of both Lubrication and Standby Phase.
- Counter based Lubrication phase can be used independently while monitoring correct function of a cycle switch, ideal for use in impulse piloted system (e.g. chain and conveyor lubrication).
- Minimum Level Input.
- 4..20ma Input for analog measurement of Reservoir Level.
- Ability to configure pump output for Electrical or pneumatic pump (pump On/Pump Off values can be set individually).
- General Alarm Output Relay can be a constant signal or generate a coded alarm to allow remote PLC to determine nature of alarm.
- Integrated LCD Display for diagnostic and ease of use.
- Diagnostic and Lubricant Counters for Operation and Alarm conditions.

All configuration parameters can be set from the Setup menu via the LCD display using the front panel keys. No complex internal switches need to be set.

## 3. DESCRIPTION OF OPERATING PROCEDURES

---

The **VIP5** controller has three operating modes:

1. **CYCLE**
2. **PULSE**
3. **FLOW**

**CYCLE and PULSE** modes are designed for intermittent or continuous lubrication system that require the control of a pump and monitoring of feedback signals to determine when lubrication has successfully completed.

**FLOW** is designed as a monitoring only operating mode that allows the user to monitor a pulse signal and determine the actual flow rate. This is useful for process control and generally used in re-circulating systems.

### 3.1 CYCLE and PULSE Control System operating Principles.

The VIP5 control system is designed to control intermittent or continuous lubrication system with a variety of control inputs. Intermittent operating principle is based on three distinct phases.

- **PRELUBE Phase** -> Pre Lubrication that occurs during power up of a system.
- **LUBRICATION Phase (Lube → Wait stages)** -> This is when lubricant is provided (as above)
- **STANDBY Phase** -> The system is inactive awaiting for the next LUBRICATION PHASE

Continuous operation is identical but does not have a STANDBY Phase.

Additionally, the VIP5 Control system can also be used as a simple monitoring device in the "FLOW" operating Mode described later in this manual.

### 3.1.1 PRELUBE Phase

The user can specify a number of lubrication cycles (up to 999) which are initiated when the unit is powered on. If **Prelube** is set to zero, the VIP5 controller will revert to its pre-powerdown status.

**Prelube** is activated:

- When the VIP5 system is powered on.
- After the RESET button is pressed.
- After the VIP5 exists from the setup menu.

As indicated above, if **Prelube** is set to “0” value, the **Prelube** phase is omitted and when the system is powered on, the system will continue from its previous position in the program.

### 3.1.2 LUBE (Lubrication) Phase

The Lubrication Phase is a set of Lubrication Cycles that can be repeated up to 999 times.

A Lubrication **Cycle** consists of activating the lubrication pump, then **Control** monitoring a feedback signal from a sensing device if installed. There is then **Delay** period before switching off the pump, and a **Wait** period before the lubrication cycle can be repeated. Specifically:

- **Cycle** (time) determine how long to wait for the control signal before determining an alarm condition.
- **Control** (Type) determines what kind of control signal (Single Line, Dual Line, Injectors). Alternatively a Timer only setting means no monitoring will occur.
- **Delay** (time): Is how long to wait for the signal to be confirmed and switch off the pump (in Pressure switch applications)
- **Wait** (time): determines how long to wait in a pump off condition before repeating the cycle. This is necessary in injector systems and represents the minimum time required for the injectors to reset. In progressive systems for example this can be set to zero.

### 3.1.3 STANDBY Phase

During the **Standby** the VIP5 switches off the pump and waits for the start of another **Lubrication Phase**. The duration of the **Standby** phase can be determined by a countdown timer or a by an external pulse signal that can be used as a counter. The VIP5 also allows a combination of both timer and external pulse signals to determine either the next Lubrication phase or to signal an alarm if external pulse signals are not received within a pre-set time.

## 3.2 FLOW MODE OPERATING PRINCIPLES

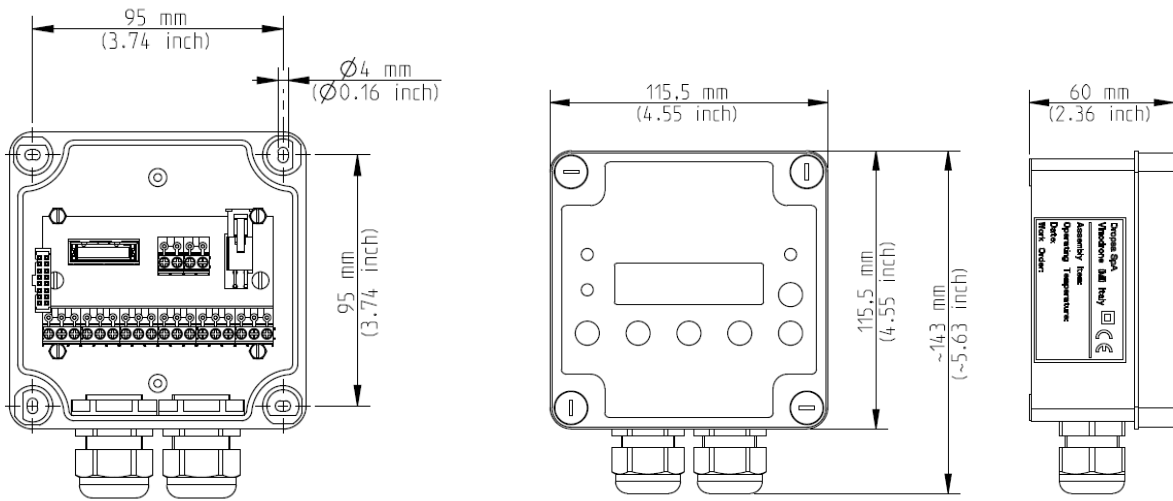
The VIP5 can also be used as a simple Flow monitoring system. When **Flow** mode is selected the unit operates as a flow display and monitors an external signal to calculate the flow based on external impulses. The User can additionally set a minimum and maximum Flow limit. If the flow is out of these limits, the remote alarm contact and the alarm LED on the front panel are both activated.

## 4. FIXING AND INSTALLATION DETAILS

### FIXING DIAGRAM

The different VIP5 models are shown below with fixing dimensions.

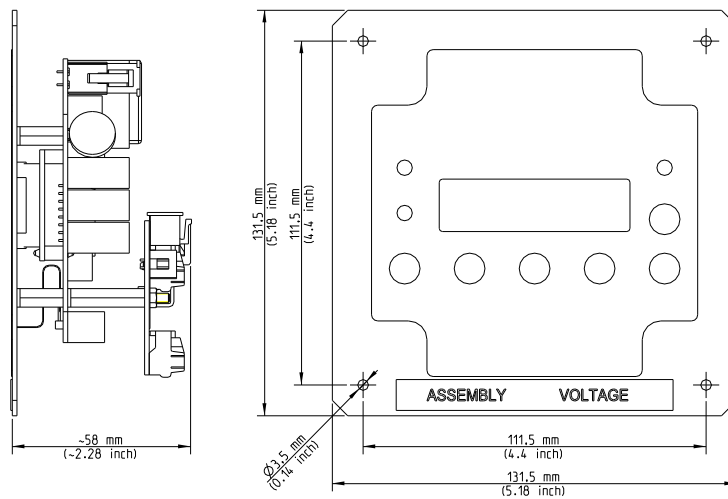
#### VIP5 Plastic Box (cod. 1639140/1639141/1639142)



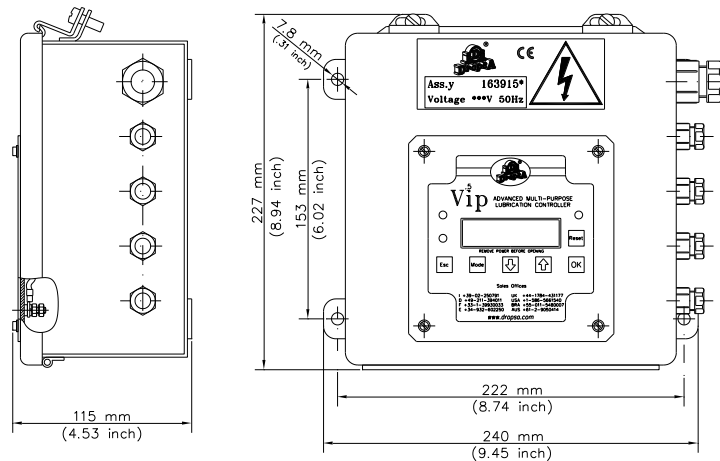
VIP5 Fixing dimensions

VIP5 Dimensions

#### VIP5 Front panel (cod. 1639144/1639145/1639147)



#### VIP5 Steel Box (cod. 1639150/1639151/1639152/1639153)



## **4.1 UN-PACKING**

Once the installation point has been identified, you can unpack the VIP5 from its shipping box. Check that the unit has not been subject to any damage during transport. Dispose of the packaging in an appropriate manner, following local waste regulations.

## **4.2 INSTALLATION**

The VIP5 must be secured physically to a mounting location and cabled to all the required components of the lubrication system.

The following are general recommendation:

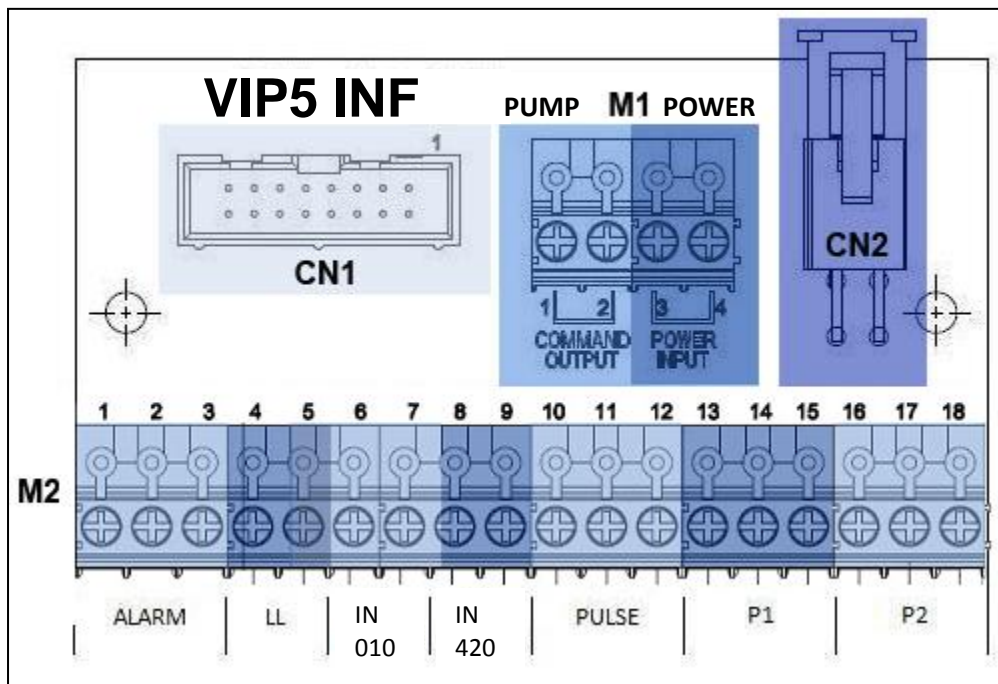
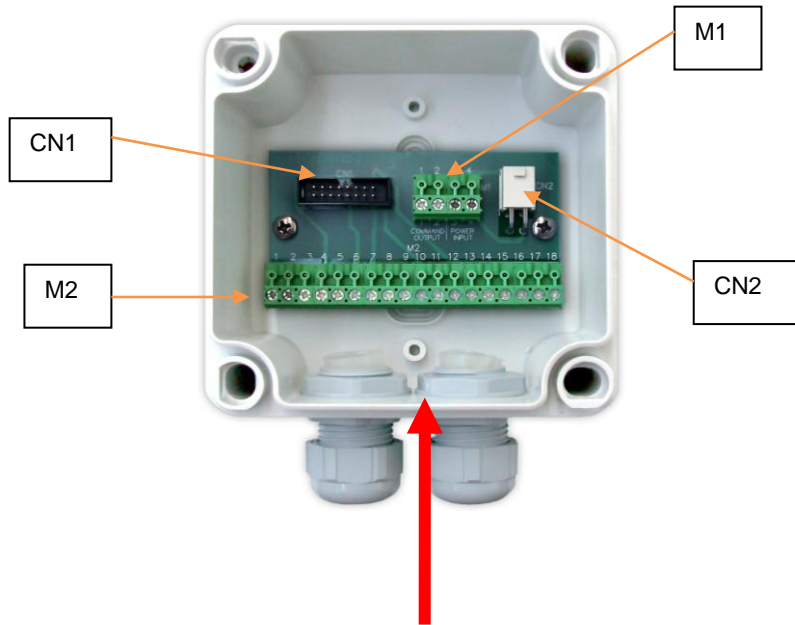
- Install the unit in an easy to access location so that users can avoid unnatural postures and have good visibility of the display.
- Leave 100mm or 4 inches around the unit of space to facilitate cabling and maintenance.
- Do not install the unit in dangerous or excessively aggressive environments with high levels of vibration or in the vicinity of flammable substances.
- Always use the four fixing points as indicated in the diagram.

## 5. INPUTS/OUTPUTS

### 5.1 ELECTRICAL CONNECTIONS

The input and output connections for the lubrication devices and sensors can be achieved via the M1 and M2 terminal strip located on the bottom of the VIP5 box.

The following are connection information for the M1 and M2 terminal strips.





The following table lists INPUTS and OUTPUTS for the **VIP5**

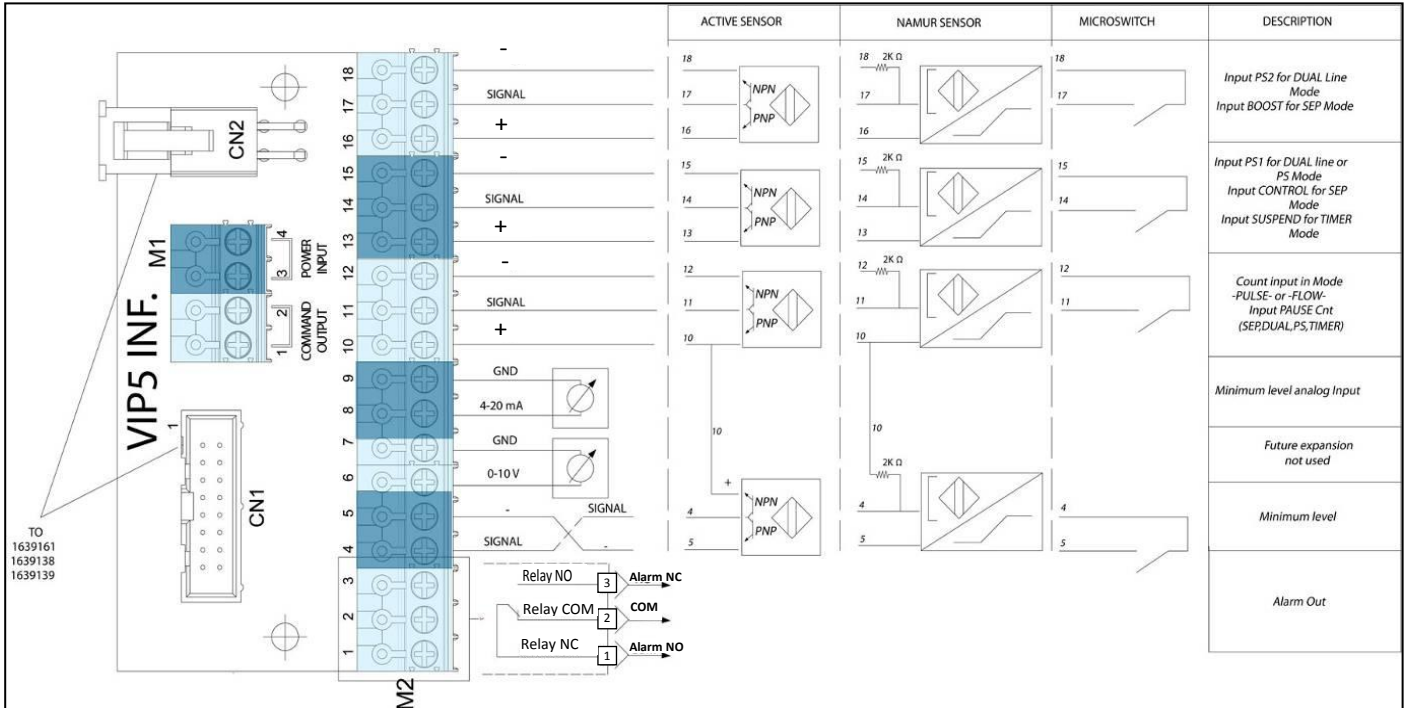
Location		TYPE	PINOUT LABEL	DESCRIPTION	NOTES
Terminal	Number				
M1	1	Output	<b>Motor</b> line 1 (+)	Pump/Solenoid Connection	max 10A @ 230V~ Power is supplied via relay from pins 3 and 4
M1	2		<b>Motor</b> line 2 (-)		
M1	3	Input	<b>Power</b> AC/DC input 1 (+)	Power connection for VIP5	12V/24V/110V~/230V~ Depending on Model purchased.
M1	4		<b>Power</b> AC/DC input 2 (-)		
M2	1	Output	<b>Alarm</b> contact NO	Remote alarm relay	Max 2A @ 30V ~ If ALARM is set to Inverted Value (see par. 9.3) Pin1 and Pin3 are inverted
M2	2		<b>Alarm</b> contact COMMON		
M2	3		<b>Alarm</b> contact NC		
M2	4	Input	<b>LL</b>	Minimum Level Sensor	Open contact, or PNP,NPN,NAMUR (*see Note 1)
M2	5		GND		
M2	6	Input	<b>IN010</b>	0-10V Volt analogical input	Not used
M2	7		Analog GND		
M2	8	Input	<b>IN 420</b>	4-20 mA analogical input connection point	Not isolated
M2	9		Analog GND		
M2	10	Input	+Ve (see Note 2)	Input for external counting device. PNP/NPN or clean contact. Suspend input in CYCLE mode.	Clean contact, PNP,NPN,NAMUR (*see Note 1)
M2	11		<b>PULSE</b>		
M2	12		GND		
M2	13	Input	+Ve (see Note 2)	First Sensor Input for monitoring system. Eg. Pressure switch for injectors or Cycle switch for progressive system Suspend input in TIMER mode.	Clean contact, PNP,NPN,NAMUR (*see Note 1)
M2	14		<b>P1</b>		
M2	15		GND		
M2	16	Input	+Ve (see Note 2)	Second Input for monitoring system. Eg second pressure switch on a dual Line System	Clean contact, PNP,NPN,NAMUR (*see Note 1)
M2	17		<b>P2</b>		
M2	18		GND		

**\*Note 1: If using NAMUR wire sensors, a 1.5kΩ to 2.5kΩ resistor should be installed between Signal and GND (see paragraph 6.1 for wiring diagram)**

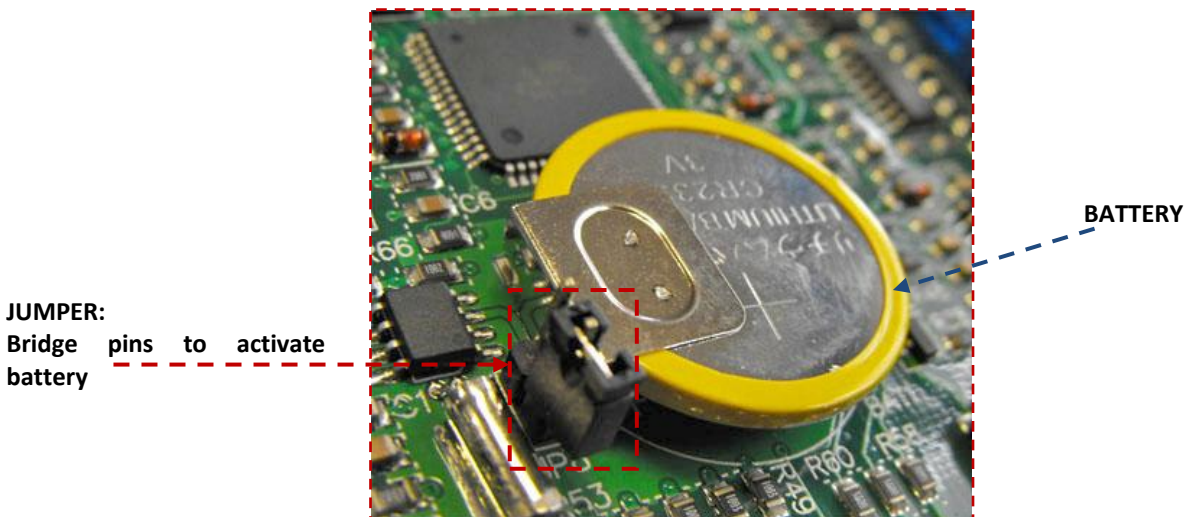


**Note 2 : for active sensors, the maximum current available is 100mA in total on +Ve. When using clean contacts, the VIP5 will use 12 or 24V to monitor the contact.**

## 5.2 WIRING EXAMPLES



## 5.3 ACTIVATING THE BATTERY FOR REAL TIME CLOCK FUNCTIONS



By inserting the Jumper into the bridging pins, the battery function is activated and this allows the **VIP5** to operate with the Date/time and status save function when the power is removed.



**Note:** Every time the battery jumper is removed and reinserted causes the DATE/TIME function to be set to zero. Therefore it is recommended that after inserting the battery jumper, the date and time is set.

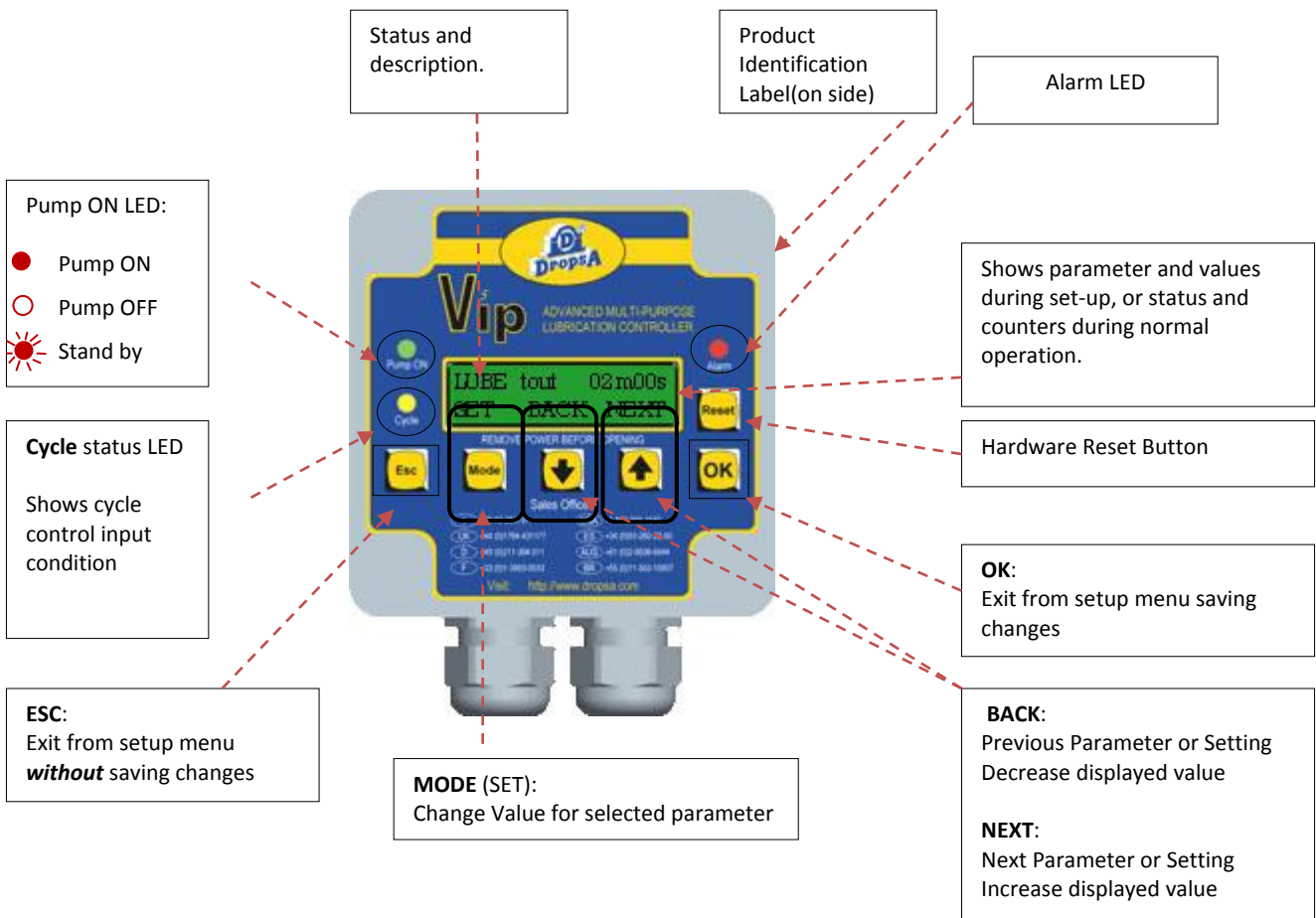
## 5.4 PRECAUTIONS TO BE USED WHEN CARRING OUT WIRING

There are no specific safety risks associated with this device. Use general precautions that you would use when operating an electrical device. All wiring should be carried out by a qualified electrician.

- Before wiring the panel ensure correct voltage as indicated on the product label.
- Only perform wiring operations once you are sure power is off and cannot be accidentally switched on.
- A circuit breaker that is easy accessible must be used in the wiring of the pump. Ensure the break contact has a contact distance of at least 3 mm
- When using the 12-24V AC device, the power must come from a transformer in compliance with prescription of IEC 62558-2-6
- In case of connection to 230 V~ or 110 V~, the connections on M1 (power and pump) must have reinforced isolation up to the terminal connections. The cable must be routed to avoid damage to the outer isolation sheaf.
- It is advisable to use a fuse or a differential isolation to protect the device. The device should have a recommended value of 0,03 Ampere with 1 millisecond maximum activation time. isolation capability  $\geq 10\text{kV}$  and nominal  $I_n=6\text{A}$ .
- It is good practice to use cable ties that can help prevent cables being torn

## 6. OPERATOR INTERFACE FRONT PANEL

### 6.1 LAYOUT AND STATUS TABLE OF VIP5 FRONT PANEL



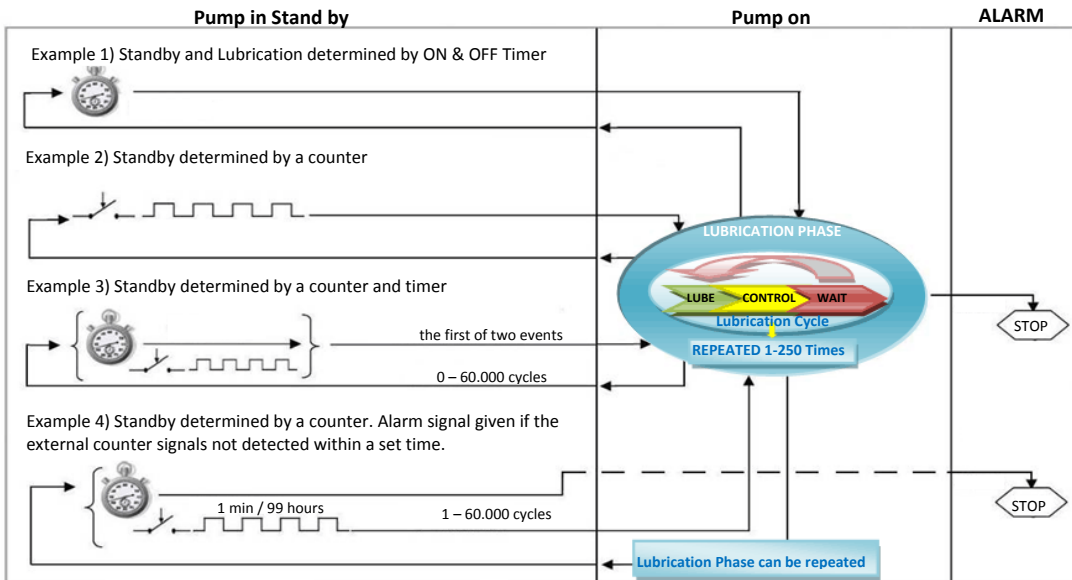
VIP5 Condition	PUMP ON LED	CYCLE INPUT LED	ALARM LED
Alarm	OFF	ON	ON
Standby Phase	OFF	ON	OFF
Lubrication Phase/Cycle	ON	ON	OFF
Setup	OFF	OFF	ON

## 7. OPERATING MODE

VIP5 has three different operating modes which are determined during the setup stage described previously. These are: **CYCLE**, **PULSE** and **FLOW**.

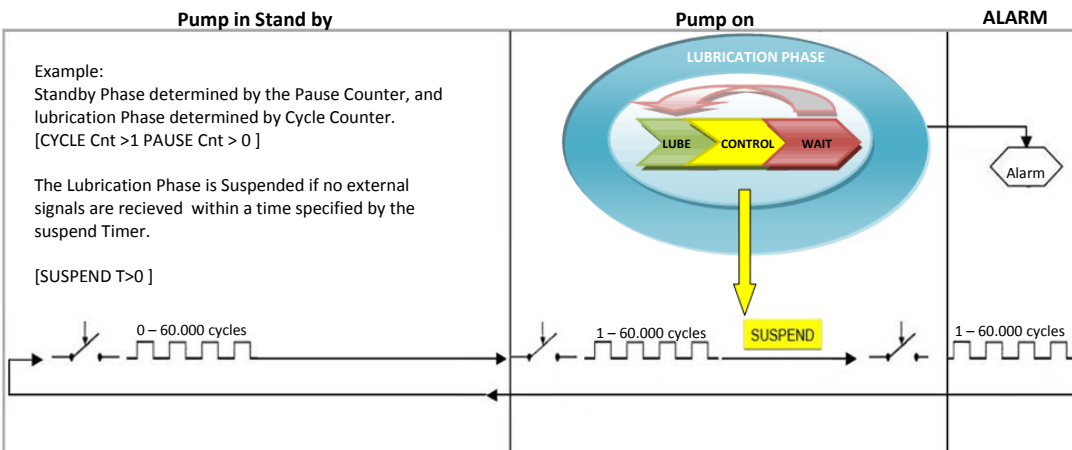
### 7.1 CYCLE Mode

In *Cycle* mode a cycle sensor determines the completion of the LUBRICATION PHASE. If using timer setting, the Lubrication Cycle will complete when the timer expire. The Standby phase is determined by a timer or by an external input counter.



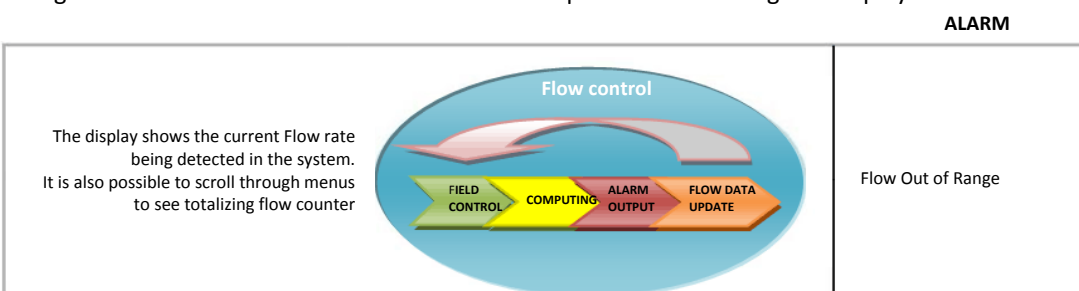
### 7.2 PULSE Mode

In *Pulse* mode, the duration of the **Standby Phase** and the **Lubrication Phase** are both determined by an external counter. The correct operation of the **Lubrication Cycle** can be monitored using a cycle sensor.



### 7.3 FLOW Mode

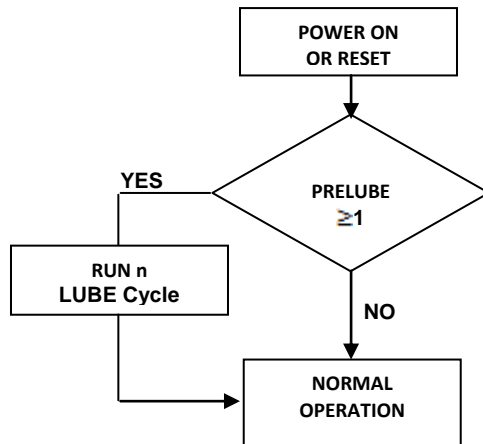
Using this mode allows the VIP5 to be used as a simple flow monitoring and display device.



#### 7.4 PRELUBE

The Prelube cycle is a pre-lubrication cycle that is triggered when the system is powered on or reset. If the pre-lube cycle value is set to 1 or greater the VIP5 will perform the set number of **Lubrication Phases**.

Note that if Each **Lubrication Phase** comprises two or more **Lubrication Cycles**, then the total cycles performed will be equal to the **Lubrication Cycles** multiplied by the **Prelube Cycles**.





## 8. CYCLE MONITORING

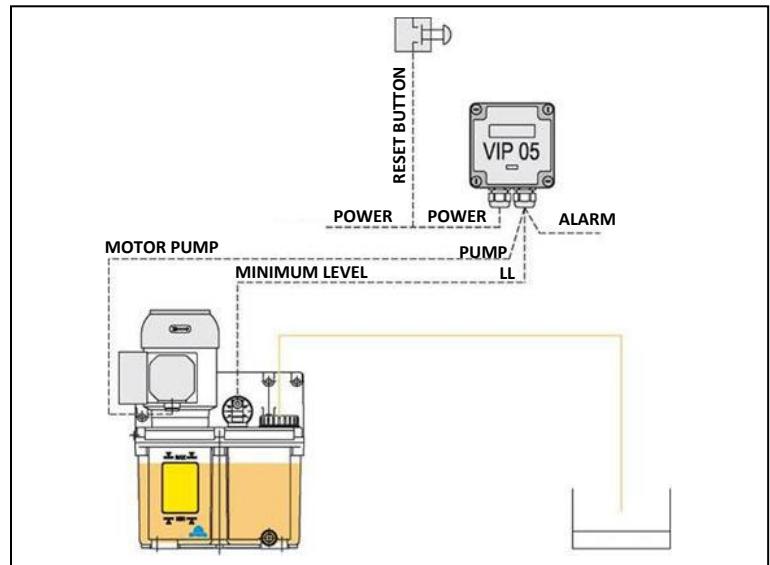
### 8.1 MONITORING OPTIONS.

There are four possible Cycle Monitoring Options, explained below.

#### 1) TIMER – TIME ONLY

The Lubrication cycle is simply operated according to a preset Timer value.

Therefore, **no input is monitored** to confirm the correct completion of the lubrication cycle.



#### 2) PS – PRESSURE SWITCH

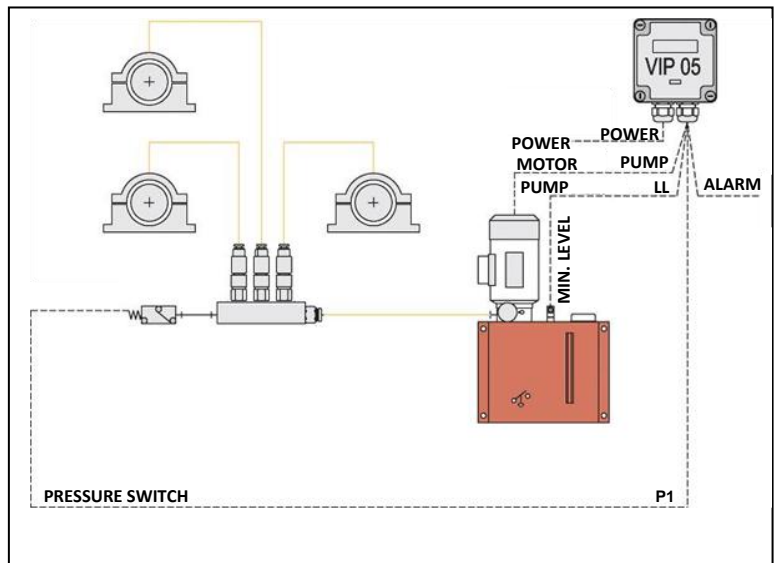
Pressure switch monitoring is typically used in injector system.

The **VIP5** will monitor input **P1** to verify that it is an **OPEN** contact at the start of the cycle.

The pump is activated and the pressure switch must **CLOSE** within a timeout period otherwise a cycle alarm is generated.

Once the **P1** contact is closed, a **DELAY** timer checks that the switch is not broken for a set time before switching off the pump. This ensures that pressure spikes at the start of a lubrication cycles on long lines are filtered out.

A **WAIT** timer can be set to allow the injectors to reset when using multi cycle configuration.



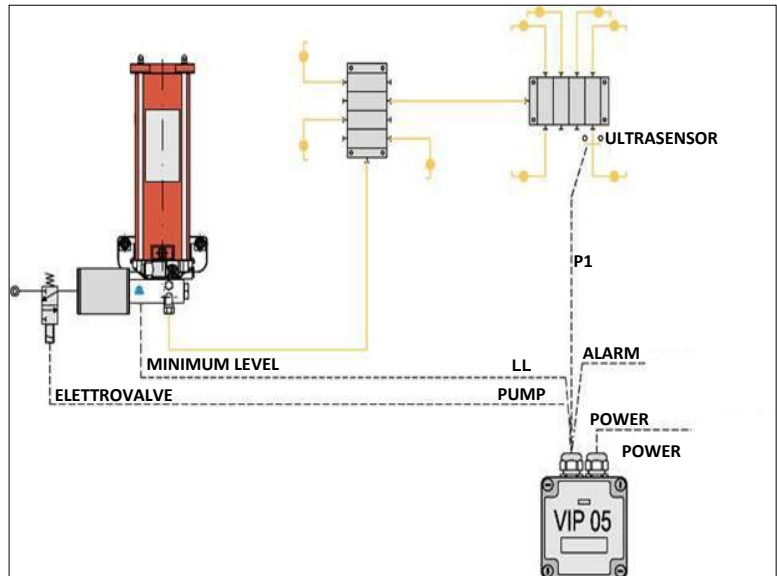
### 3) SEP – SERIES PROGRESSIVE

Series progressive Operating mode is used for Cycle switch monitoring typically on progressive systems.

The Pump is switched on and P1 input is monitored and must change state twice within the timeout period otherwise a timeout alarm will be generated.

Once P1 changes state twice, the pump is switched off and VIP5 goes to standby or the Lubrication Cycle is repeated for the desired number of times

There is no WAIT time in this mode as progressive systems do not need venting time.



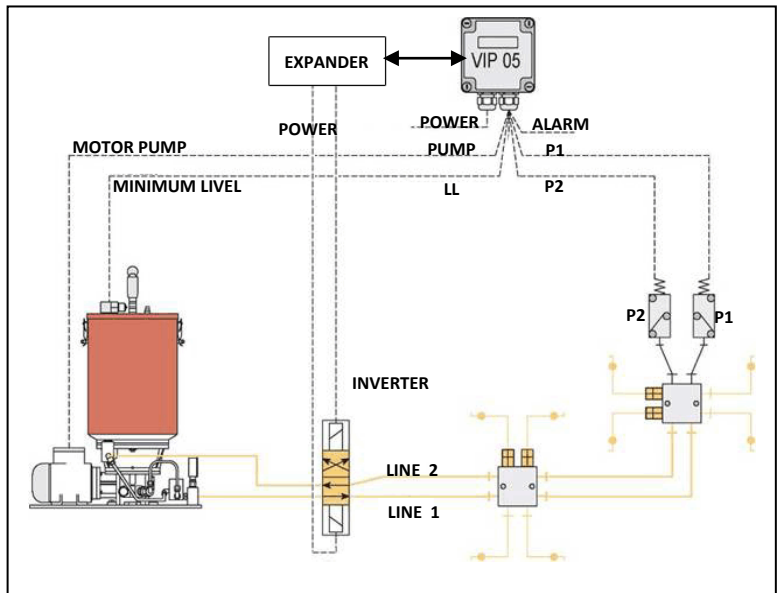
### 4) DL – DUAL LINE

Dual Line cycles generally use two pressure switches connected to P1 and P2.

The VIP5 starts the pump and must see that P1 switch is closed within the timeout time. After this, the Lubrication lines are inverted by use of a directional valve.

The P2 switch must also then be made within the timeout timer setting.

A user configurable DELAY timer can be set to filter pressure spikes as in the PS operating mode.



## 8.2 NOTES ON CONTROLLING A DIRECTIONAL VALVE IN A DUAL LINE SYSTEM:

When using hydraulic dual line system directional valves the pressure itself causes the valve to perform the line inversion.

However, if using an electrically operated directional valve then a signal must be given to power the solenoid that causes the valve to invert.

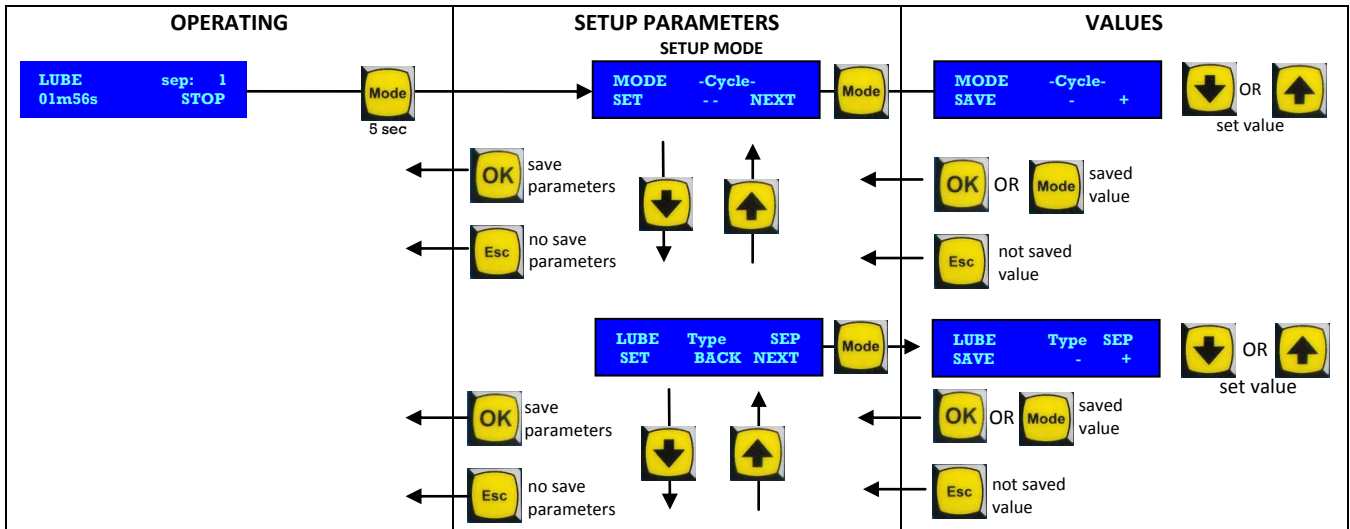
The VIP5 already has this control capability, but you must fit the equipment that included the Terminal Wiring board in order to have the output present to power the solenoids. For further information contact the Dropsa technical sales office.

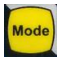
## 9. SETUP PROGRAMMING



The following section explains how to navigate the **VIP5** setup menus and contains detailed explanation of each parameter and possible values.

### 9.1 Navigating around the setup menu.

The navigation map below shows how to navigate around the setup menu.



To enter the SETUP menu from the OPERATING Mode, hold the  (Mode) button for 5 seconds.

The   (Up and Down) keys allow scrolling through the parameters.

By pressing the Mode button again, the indicated parameter value can be modified by using the Up and Down keys.

To exit, use the  (OK) key, or  (Esc) if you wish to exit without saving.

### 9.2 BASIC/ EXTENDED MENU

When turn on Vip5 Controller show a BASIC menu that allows user a quickly setup, there are only main parameters to manage a lubrication cycle.

The "Quick start guide" section, placed early this manual, describes BASIC MENU programming mode.

The VIP5 Controller can operate or in stand-alone mode ( default) or inserted in a system of overall control which can receive timing signals for starting and stopping of lubrication. VIP5 can also operate in exclusive monitoring lubrication mode.

The Extended Menu allows to set all parameters that guarantee the total control of the system.

To see the complete list of extended parameters, see section 9.3.

### 9.3 PARAMETERS AND VALUES

The following table explains the parameters and possible values of the VIP5 selecting basic or extended menu.

PARAMETER NAME	DEFAULT VALUE	DESCRIPTION	VALUES/ RANGE	APPLICABILITY										
MODE	CYCLE	<b>SELECTS THE OPERATING MODE:</b>												
		Flow monitoring mode	FLOW											
		Lubrication Cycle completed when the cycle sensor confirms correct lubrication	CYCLE											
		Both Standby and Lubrication Phase determined by external signal.	PULSE											
TYPE (Basic)	SEP	<b>SELECTS THE CYCLE MONITORING:</b>												
		Timer only	TIMER											
		Pressure switch	PS											
		Progressive Cycle switch	SEP											
		Dual Line Pressure switches	DUAL	DUAL	SEP	PS	TIMER/NO CONTROL							
INVE.Wait	.null.	Waiting time for inversion command and pump	1s - 1h	X							X	X		
PAUSE BY	TIMER	Determines Standby Phase Timing												
		Time based Standby	Time											
		Whichever of above 2 events occurs first.	Counter Time &											
		A set number of external PULSE signals	Counter											
		By PULSE signals. However, if PAUSE TIM. is reached, an alarm will be given	TOUT & Counter											
PAUSE TIM. (Basic)	6m 00s	Standby Timer setting. Null means the standby phase will be skipped	Null – 99h 00m	X	X	X	X					X		
CYCLE TOUT	30 sec	Timeout counter determines how long to wait for cycle completion before a timeout alarm is generated.	1s-1h	X	X	X					X	X	X	
LUBE TIME (Basic)	30 sec	In timer Mode, how long the pump will run.	0s – 99h				X					X		
LUBE CYCLES	1	Number of Lubrication Cycles to complete a Lubrication Phase	1 – 250	X	X	X	X					X		
START IN	Resume	Determines state at power on:												
		Start in Lubrication Phase	Lube	X	X	X	X				X	X		
		Resume from power down state	Resume											
PRELUBE	0	Number of Prelube Cycles	0 - 250	X	X	X	X					X		
ALARM	Standard	How REMOTE ALARM is managed												
		Relay is powered off during alarm	Standard											
		Relay is powered On during alarm	Inverted	X	X	X	X				X	X	X	
		A Pulse Coded Alarm signal is given ( for details see section 10.3)	Coded											
STOP	On all	Determines what Alarm conditions should stop the VIP5 Lubrication cycles.												
		Never stop the lubrication cycle	On None											
		All alarm conditions	On All											
		All but min Level stops the Vip5	All but min Level											
		Only minimum level alarm stops the VIP5	Min level only											
		All but Maximum Level	All but Max level											
PUMP (Basic)	Continuous	Pump output can be constant signal, pulsed signal or synchronized with control signal (see next 3 parameters)	Continuous Pulsed	X	X	X	X				X	X		
		Synchronized									X			
→PUMP TON	3.0	Sets the ON value of the pump pulse.	0.1-25.0s	X	X	X	X				X	X		
→PUMP TOFF	2.0	Sets the OFF value of the pump pulse.	0.1-25.0s	X	X	X	X				X	X		
WAIT TIME	10s	Time between two Lubrication Cycles within the Lubrication Phase	Null - 2 min	X	X	X	X					X		
BOOST CYCLES	1	In a SEP mode, If P2 input is closed the LUBE CYCLES values is increased by this value contained in this setting	1 - 250		X							X		

DELAY TIM	5s	When the pressure switch is made, how long to keep the pump running to ensure that the signal is genuine and not a pressure spike With FLOW mode time an alarm condition must exist before being reported	0s – 2min	X		X		X	X	X
SUSPEND	Never	When the suspend signal is given to the controller , we can have following values  Never – Do not stop  In Pause – Stop at the end of lubrication phase  In Cycle – Stop during lubrication phase  Always – Stop when a signal is received	Never  In Pause  In Cycle  Always	X	X	X	X		X	
SUSPEND T	Never	In Pulse Mode, will suspend the Lubrication Phase if a signal is not received.	Null – 2min	X	X	X	X	X		
PAUSE CNT (Basic)	1	In Cycle Mode, set number of pulses during pause phase. This mode can be used with.  If pause is zero will be based on “pause time” setting.	Null – 250 (cycle mode)  Null-6000 (PULSE mode)	X	X	X	X	X	X	
PAUSE MULTIP.	1	The ratio that can be applied for ‘pause count’ setting, to allow the user to obtain a higher counting breaks . ( eg., if pause is 52 and the multiplier is 100, the value will be 5200 )	1; 10; 100	X	X	X	X	X		
CYCLE CNT	1	The Duration of the Lubrication cycle (in PULSE Mode)	1-60000	X	X	X	X	X		
FLOW VALUE	1,0	Informational value of how much lubricant is dispensed per <b>Lubrication Cycle</b>	0.0 - 1000	X	X	X	X	X	X	X
UNITS	Counts	Information Unit for the <b>flow value</b> parameter used for display purposes only.	Counts, CubicC., Liters, Pints, Gallons, KilosGrams	X	X	X	X	X	X	X
FLOW MIN	10,0	Minimum Flow Setting Totally excludes flow alarm if null	0.0 - 6000							X
FLOW MAX	100,0	Maximum Flow Setting	0.0 – 6000							X
MIN. LEV. INPUT	NC	Configuration for the input signal of minimum level	NC NO 4-20mA	X	X	X	X	X	X	
→LO LEVEL MA	19,8	Setting a low level if you use 4-20mA input	4.0 – 20.0	X	X	X	X	X	X	
→HI LEVEL MA	4,2	Setting a high level if you use 4-20mA input	4.0 – 20.0	X	X	X	X	X	X	
MININPUT DELAY	0,5s	When resetting a low level alarm, grace period before monitoring level inputs.	0s-5s	X	X	X	X	X	X	
DATETIME	Disable	Enable or Disable the Real Time clock functions. Note: be sure battery is connected.	Enable Disable	X	X	X	X	X	X	X
→DAY	1	DateTime: Day setting	1 – 31	X	X	X	X	X	X	X
→MONTH	1	DateTime: Month setting	1 – 12	X	X	X	X	X	X	X
→YEAR	2000	DateTime: Year setting	2000 - 2099	X	X	X	X	X	X	X
→HOUR	0	DateTime: Hour setting	0 – 23	X	X	X	X	X	X	X
→MINUTE	00	DateTime: Minute setting	0 – 59							
SET DEFAULT VAL.		RESET TO FACTORY DEFAULT SETTINGS	Yes – No	X	X	X	X	X	X	X

#### 9.4 SPECIAL FUNCTIONS:

- 1) **LCD CONTRAST ADJUSTMENT** : by Pressing ESC or OK during power on or immediately after a reset, you access the menu for adjusting the contrast of LCD; hold down OK the contrast decreases, with ESC increases.
- 2) **FLOW TOTALIZER DATA VISUALIZATION:** with the VIP5 in standby mode, pressing the OK key will allow you to scroll through the current average flow rate, or the total volume dispense in the last DAY, HOUR or TOTAL since last reset.
- 3) **RESETTING THE FLOW TOTALIZER:** during the visualization of the above parameters the flow can be reset by holding the DOWN key.
- 4) **TIME AND DATE:** during standby, it is possible to view time and date by using the ESC key only if DATETIME parameter is set on “enable”.
- 5) **EVENT LOG VIEWER:** by holding the Up or Down key for five seconds it is possible to scroll through the Event Log . ( available in version FW 2.xx onwards)



## 10. PROBLEMS AND SOLUTIONS



**ATTENTION:** The VIP5 should only be repaired by qualified Dropsa technicians.

### 10.1 ALARM CODE TABLE

The following is a list of possible alarms generated by the VIP5 with information for troubleshooting purposes.

ALARM CODE	DESCRIPTION	NOTES/CHECKS/SOLUTIONS
ALARM 01	LOW LEVEL	The Low level sensor has triggered. Replenish the oil reservoir.
ALARM 02	CYCLE TIMEOUT	The cycle switch has not been detected in the specified time. Make sure that you have set the timer to a value that allows the cycle to complete.
ALARM 03	BOOST WARNING	The P2 input has been activated and the Boost Function has increased the number of Lubrication Cycles in the Lubrication Phase.
ALARM 04	THERMAL PROT.	The Thermal relay trip signal has been detected. Verify and repair.
ALARM 05	PS ALREDY ON	In PS Cycle mode, the pressure switch was already active before the pump was switched on. Check to ensure the venting system is operating correctly.
ALARM 06	PS AFTER WAIT	In PS Cycle mode, the Pressure switch cannot achieve pressure for the duration of the DELAY time parameter. Check parameters are correct and the pump is operating correctly and can maintain pressure.
ALARM 07	NOT IN PRESS.	No Pressure switch detected within the timeout time. Verify pump and pressure switch are operating correctly and there are no leaks.
ALARM 08	PAUSE TIMEOUT	In TOUT & Count Mode, no external signal has been received for the Timeout period setting. Verify external switch is operating.
ALARM 09	HI LEVEL	MAX level is present in tank.
ALARM 10	BAD SET 420MA	Programming error on the 4-20 mA input, modify parameters to have a range MIN-MAX >4mA
ALARM 11	BAD IN 420MA	Incorrect wiring on the 4-20 mA, signal underrange or overrange
ALARM 12	LO FLOW	In Flow mode, the current flow is below the minimum set level
ALARM 13	HI FLOW	In Flow mode, the current flow is above the maximum set level
ALARM 14	LO FLOWT	In Flow mode, the current flow is below the minimum set level because no flow input signal has been received for the timeout time. This generally indicates a broken sensor or that the system being monitored is switched off.
ALARM 15	UNCODED FAIL	An unknown Internal error has occurred. Try resetting the unit. If the error re-occurs, the unit must be returned to Dropsa for inspection.

### 10.2 RESTART/RESET

When an alarm occurs it is displayed on the LCD display with the alarm number and a brief description of the alarm.

For Example:



By pressing the button located under the "Setup" label, the user can go and modify the parameter values if it is some incorrect parameter that is causing the alarm.

By pressing the button located under "Reset" (or the hard reset button) the VIP5 will restart its programming with the last saved parameters.

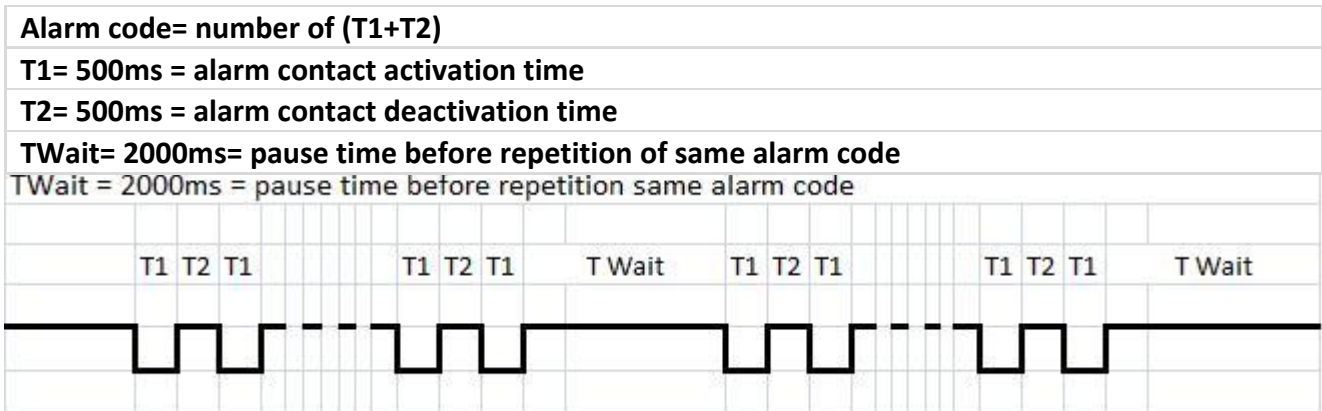
### 10.3 REMOTE CODED ALARM FUNCTION

The VIP5 controller has the ability to use a remote pulsed coded alarm contact. Every time the VIP5 control enters an alarm condition, the remote alarm relay contact is activated. Most alarm contacts are simply a NC or NO contact that gives a remote system indication that the local controller is in a fault condition.

Additionally, the VIP5 can trigger the alarm according to the alarm code being generated and allow a remote PLC (or even a remote LAMP signal) to read the number of the alarm being generated.

This is done by pulsing the alarm relay in 500ms bursts with a 2000ms gap between each signal burst.

The timing chart below shows how to interface the logic with your PLC.



### 11. TECHNICAL SPECIFICATIONS

<b>OPERATING VOLTAGE</b>	12/24 Vdc/ac (1639141) 110V~ (1639142) 230V~ (1639140)
<b>Power consumption</b>	2,5W
<b>Temperature Operating Range</b>	- 5 °C ÷ + 70 °C
<b>Permissible Temperature storage range</b>	- 20°C ÷ + 80 °C)
<b>Operating Relative Humidity</b>	90% max

**Note :** To ensure that seal of the casing is guaranteed alone use appropriate cable glands that provide adequate protection.. If the cable glands are not sufficient in number for your configuration, use a multi-connector solution and a cabling harness that will ensure adequate sealing and avoid torsion and tension on the cable.

### 12. MAINTENANCE PROCEDURES

VIP05 has been designed not to require any regular maintenance. We recommend to occasionally clean the unit with a damp cloth, not using solvents

The battery life is approximately 10 years. In the event that the battery needs to be replaced you should note that there are two possible battery types.

- a) A Soldered type battery that must be removed and re-soldered.  
This type of battery can be obtain from Panasonic PART NUMBER BT-CR2032-H, easily purchased all over the world.
- b) The replaceable type battery can be simply removed and replaced.  
This type of battery can be obtain from Panasonic PART NUMBER CR2032, easily purchased all over the world.

### 13. DISPOSAL PROCEDURES

---

The unit does not contain any harmful substances and should be disposed of following local regulations, including any recycling information indicated on the components themselves.

### 14. ORDERING INFORMATION

---

#### VIP5

PART NUMBER	DESCRIPTION
1639140	VIP5 230V~
1639141	VIP5 12/24V DC/AC
1639142	VIP5 110V~
1639144	VIP5 PANEL MOUNT 230V~
1639145	VIP5 PANEL MOUNT 12/24V DC/AC
1639147	VIP5 PANEL MOUNT 110V ~
1639150	VIP5 STEEL BOX 230V~ 3PH
1639151	VIP5 STEEL BOX 230V~ 3PH
1639152	VIP5 STEEL BOX 400V~ 3PH
1639153	VIP5 STEEL BOX 500V~ 3PH
1639155	VIP5 PLASTIC BOX 110/230V~

### 15. MOVING AND SHIPPING

---

Use suitable padded packaging when shipping the VIP5 controller and ensure that no damage has been sustained before reinstallation.

### 16. OPERATING PRECAUTIONS

---



**ATTENTION:** It is necessary to carefully read about the instructions and the risks involved in the use of lubrication machines.

The operator should make sure he fully understands the operating and safety procedures of the VIP5 controller and any connected machinery or devices.

#### **Power supply**

*Any type of intervention must not be carried out before the unplugging of the machine from power supply.*

*Make sure that no one can start it up again during the intervention.*

*All the installed electric and electronic equipment, reservoirs and basic components must be grounded.*

#### **Flammability**

*The lubricant generally used in lubrication systems is not normally flammable.*

*However, it is advised to avoid contact with extremely hot substances or naked flames.*

#### **Pressure**

*Prior to any intervention, check the absence of residual pressure in any branch of the lubricant circuit as it may cause oil sprays when disassembling components or fittings.*

#### **Noise**

*The device does not produce excessive noise, less than 70 dB(A) .*

## 17. WARRANTY

---

All products manufactured and marketed by Dropsa are warranted to be free of defects in material or workmanship for a period of at least 12 months from date of delivery.

Extended warranty coverage applies as follows.

Complete system installation by Dropsa: 24 Months.

All other components: 12 months from date of installation; if installed 6 months or more after ship date, warranty shall be maximum of 18 months from ship date.

If a fault develops, notify Dropsa giving:

- ✓ A complete description of the alleged malfunction
- ✓ The part number(s)
- ✓ Test record number where available (format xxxxxx-xxxxxx)
- ✓ Date of delivery
- ✓ Date of installation
- ✓ Operating conditions of subject product(s)

We will subsequently review this information and supply you with either servicing data or shipping instruction and returned materials authorization (RMA) which will have instructions on how to prepare the product for return.

Upon prepaid receipt of subject product to an authorized Dropsa Sales & Service location, we will then either repair or replace such product(s), at our option, and if determined to be a warranted defect, we will perform such necessary product repairs or replace such product(s) at our expense.

Dropsa reserves the right to charge an administration fee if the product(s) returned are found to be not defective.

This limited warranty does not cover any products, damages or injuries resulting from misuse, neglect, normal expected wear, chemically caused corrosion, improper installation or operation contrary to factory recommendation.

Nor does it cover equipment that has been modified, tampered with or altered without authorization.

Consumables and perishable products are excluded from this or any other warranty.

No other extended liabilities are stated or implied and this warranty in no event covers incidental or consequential damages, injuries or costs resulting from any such defective product(s).

The use of Dropsa product(s) implies the acceptance of our warranty conditions. Modifications to our standard warranty must be in writing and approved by Dropsa.

## 18. REVISIONS

---

The following is a list of key changes between software releases.

---

REV. FW	DATA	MODIFICHE
3.0		<p>New menu layout and "QUICKSTART" mode to allow simple for basic lubrication parameters.</p> <p>In PULSE mode, the BOOST CYCLES parameter has been excluded as redundant.</p> <p>In PULSE mode, multi cycle possibility using a PS type system has been enabled.</p>
2.04	01/12/2010	<p>Change: Modify default value for TOT REFILL parameter to 10 hours ( instead of 2 minutes)</p> <p>New: FLOW mode feature added</p> <p>Change: Alarm relay activation fix for configurations using suspend feature.</p> <p>New: External pressure switch input alarm added</p> <p>New: In DUAL mode, secondary solenoid control enabled.</p>
2.03	24/02/2010	<p>New feature: INVE WAIT parameter added</p> <p>New feature : pump control mode SYNCRONIZED added</p> <p>New feature: LUBE-NO-CONTROL value added</p>
2.02	17/02/2010	<p>Operating test added (for internal and distributor use only)</p> <p>Change: In SUSPEND parameter added tenths of seconds</p> <p>Change: SUSPEND Bug-fix.</p>

**19. DECLARATION OF CONFORMITY**



**Dropsa Spa**  
 Via Benedetto Croce, 1  
 20090 Vimodrone (MI)  
 Italy

Tel.: (+39) 02. 250.79.1  
 Fax Sales: (+39) 02. 250.79.767  
 E-mail: [sales@dropsa.it](mailto:sales@dropsa.it)  
 Web site: <http://www.dropsa.com>



**DICHIARAZIONE C E DI CONFORMITÀ/DECLARATION OF COMPLIANCE WITH STANDARDS/  
 DECLARATION DE CONFORMITE/ KONFORMITÄTSEKLRÄRUNG DES STANDARDS /DECLARACIÓN DE  
 CONFORMIDAD/ DECLARAÇÃO DE CONFORMIDADE**

La società Dropsa S.p.A., con sede legale in Milano, Via Besana,5/ Dropsa S.p.A., registered office in Milan, Via Besana,5 / Dropsa S.p.A. au Siège Social à Milan, Via Besana,5/ Dropsa S.p.A., Sitz in Milano, Via Besana 5/ La sociedad Dropsa S.p.a., con sede legal en Milán, Via Besana,5/ A Dropsa S.p.A, com sede em Milão, via Besana, nº 5

**DICHIARA /CERTIFIES / CERTIFIE/ ZERTIFIZIERT, DASS/ DECLARA/ CERTIFICA:**

che il prodotto denominato/that the product called/ le produit appellè/ das Produkt mit dem Namen/ el producto que se llama/ o produto chamado:

Descrizione/ Description/ Description/ Beschreibung/ Descripción/ Descrição:	<b>Controllore programmabile</b>
Nome Commerciale/ Product Name/ Dénomination/ Handelsname/ Denominación/ Denominação:	<b>VIP5</b>
Versioni/ Versions/ Versions/ Versionen/ Versiones/ Versões:	<b>Base/Frontequadro/Cassetta</b>
Codici/ Codes/ Códigos/:	<b>1639140-41-42-44-45-47-50-51-52-53-55</b>

è conforme alle condizioni previste dalle Direttive CEE /has been constructed in conformity with the Directives Of The Council Of The European Community on the standardization of the legislations of member states/ a été construite en conformité avec les Directives Du Conseil Des Communautés Europeennes/ Entsprechend den Richtlinien des Rates Der Europäischen Union, für die Standarisierung der Legislative der Mitgliederstaaten, konstruiert wurde/ cumple con las condiciones establecidas por las directivas comunitarias/ foi construído em conformidade com as diretivas do Conselho das Comunidades Europeias:

- 2006/95 CE Bassa tensione / Low Voltage Directive / Directive Basse Tension/ Niedrigspannungsrichtlinien/ Directiva de baja tensión/ Directiva de Baixa Tensão;
- 2004/108 CE Compatibilità elettromagnetica/ Electromagnetic Compatibility/ Compatibilité electromagnétique/ Elektromagnetische Verträglichkeit/ Compatibilidad electromagnetica / Compatibilidade Eletromagnética



La persona autorizzata a costituire il Fascicolo Tecnico presso Dropsa S.P.A.  
 The person authorized to compile the Technical File care of Dropsa S.P.A.

Technical Director:  
*Maurizio Greco*

.....

Vimodrone (MI), November 2011

Legal representative  
 Mirella Gavazzi

.....

Copy of the original document


## 20. DISTRIBUTORS

---

 **Dropsa S.p.A.**  
Via B. Croce,1  
20090 Vimodrone (MI) Italy.  
Tel: (+39) 02 - 250.79.1  
Fax: (+39) 02 - 250.79.767  
E-mail: sales@dropsa.it (Export)  
E-mail: vendite@dropsa.it (National)

 **Dropsa (UK) Ltd**  
Unit 6, Egham Business Village,  
Egham, Surrey, TW20 8RB  
Tel: (+44) 01784 - 431177  
Fax: (+44) 01784-438598  
E-mail: salesuk@dropsa.com

 **Dropsa USA Inc.**  
50679 Wing Drive  
Utica, Michigan 48315, USA  
Tel: (+1) 586-566-1540  
Fax: (+1) 586-566-1541  
E-mail: salesusa@dropsa.com

 **Dropsa GmbH**  
Volmerswerther Strasse 80  
40221 Dusseldorf 1, Germany  
Tel: (+49) 0211-39 40 11  
Fax: (+49) 0211-39 40 13  
E-mail: sales@dropsa.de

 **Dropsa France**  
23, Av.des.Morillons  
Z.I. des Doucettes  
91140 - Garges Les Gonesse  
Tel: (+33) 01 39 93 00 33  
Fax: (+33) 01 39 86 26 36  
E-mail: salesfr@dropsa.com

 **Dropsa do Brazil**  
Rua Sobralia 171 Santo Amaro,  
Sao Paulo, Brazil  
Tel: (+55) 011-5631-0007  
Fax: (+55) 011-5631-9408  
E-mail: salesbr@dropsa.com

 **Dropsa China**  
Dropsa Lubrication Systems  
(Shanghai) Co., Ltd  
Tel: +86 (021) 67740275  
Fax: +86 (021) 67740205  
E-mail: china@dropsa.com

 **Dropsa Australia Ltd.**  
C20/148 Old Pittwater Road  
Brookvale NSW 2100  
Tel: +61 (0)2-9938-6644  
Fax: +61 (0)2-9938-6611  
E-mail: salesau@dropsa.com



**Web site: <http://www.dropsa.com> - E-mail: [sales@dropsa.com](mailto:sales@dropsa.com)**