

CHARACTERISTICS

- **3 PUMP MODELS:**
 - 1 -12 PUMP ELEMENTS
 - 1 -24 PUMP ELEMENTS
 - 1 -35 PUMP ELEMENTS
- **12V AND 24V VERSIONS**
- **12 TIMER SETTINGS**
- **6 DIFFERENT PUMP ELEMENT SIZES**
- **PUMP –TO–POINT CONCEPT IS EASY TO ENGINEER**
- **EASY TO INSTALL**
- **2 LITERS RESERVOIR**

THE COMPACT MULTI-OUTLET GREASE PUMP

The electrical action **PoliPUMP** is the **easy, fast and convenient** solution for lubrication of multi-point systems.

In just a few steps, you can install a centralised, automatic lubrication system, **up to a maximum of 35 lubrication points.**

No external metering valves, cycle sensors are required. Just plug and pipe it in and you are ready to go.

Compact and easy to use, it does not require any specific technical skills for assembly.



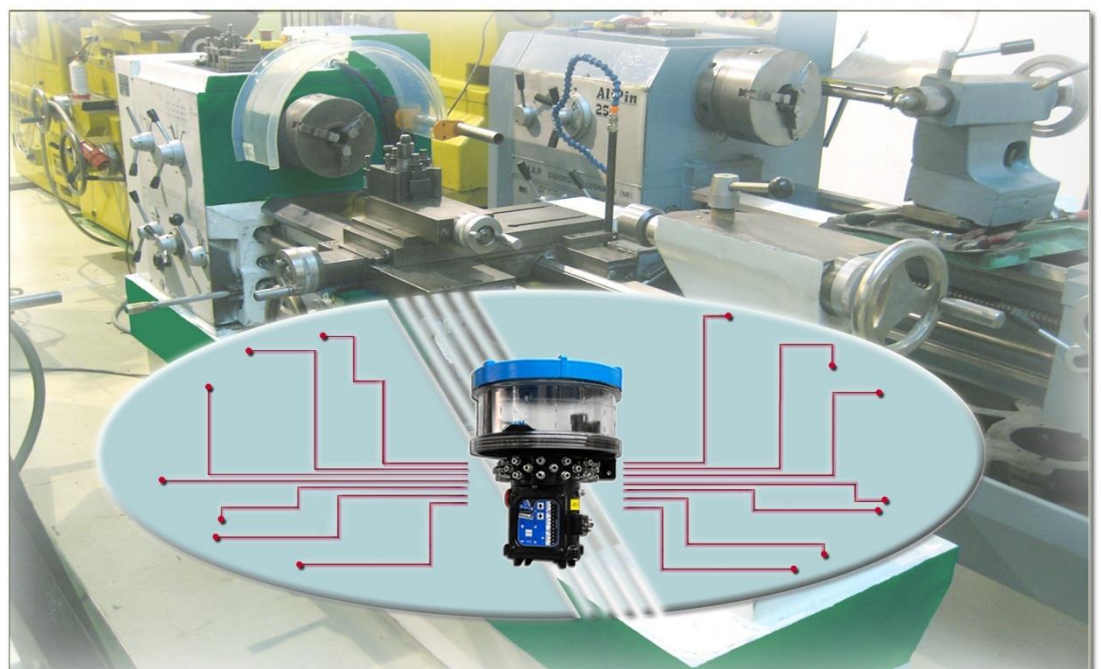
**SUPPLY UP TO 35 GREASE POINTS WITH ONE PUMP.
NO COMPLEX METERING VALVES OR SYSTEM DESIGN IS NECESSARY**

CAN BE USED STRAIGHT OUT OF THE BOX IN JUST A FEW QUICK STEPS:

- Choose from a range of 6 different Pump Elements for each lubrication point;
- Screw the Pump elements into the Outlet Manifold block;
- Quickly connect the pump elements to the points with flexible tubing – thanks to push-in fitting on the pump element;
- Power up the unit and select one of the 12 timer settings.

APPLICATIONS

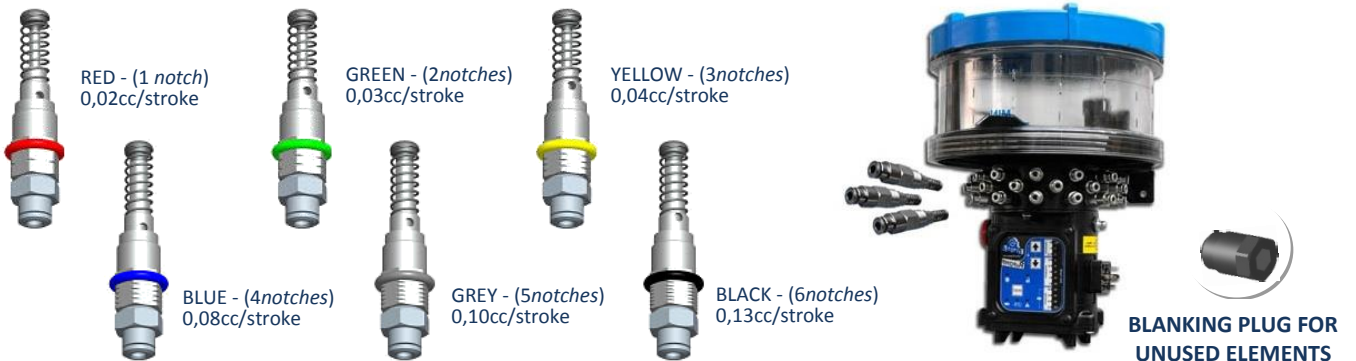
- **ANY TYPE OF DEVICE OR MACHINERY THAT REQUIRES GREASE LUBRICATION FROM 1 TO 35 LUBRICATION POINTS**



PURCHASE AND GET THE PUMP UP AND RUNNING IN JUST A FEW SIMPLE STEPS:

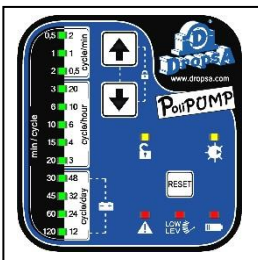
1. PICK NUMBER AND TYPE OF YOUR PUMPING ELEMENTS

Pumping elements are installed sequentially around the outlet manifold.



There are 6 different pump element sizes for you to select from and they are ordered separately from the pump according to how many lubrication points need to be serviced.

2. SELECT THE LUBRICATION CYCLE TIMER YOU WANT:



Once the pump has been powered on, simply use the up and down buttons to select the desired Lubrication Cycle.

There are 12 different cycle times that can be selected:

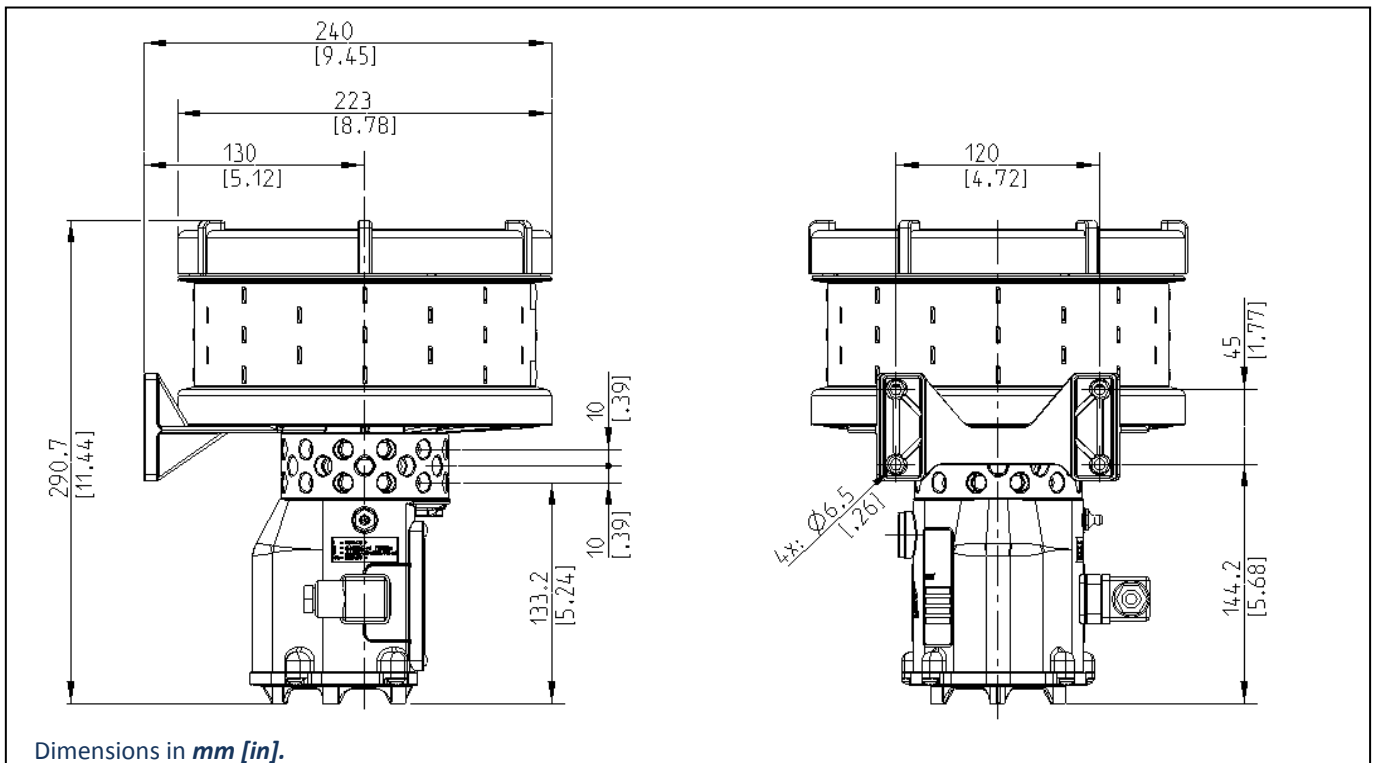
The cycle frequency available are:

- Cycles per minute: 0.5 – 1 – 2
- Cycles per hour: 3 – 4 – 6 – 10 – 20
- Cycles per day: 12 – 24 – 32 – 48

READY TO GO!



DIMENSIONS (NOT TO SCALE)



GENERAL TECHNICAL CHARACTERISTICS

| | | |
|---|---|--------|
| Pumping system | Single acting pump elements with cam activation | |
| Drive assembly | DC motor with gearbox | |
| Motor operating voltage | 12V DC | 24V DC |
| Electronic protection threshold for motor overload | 0.6 A | |
| Nett weight | 3 Kg (6.6 lb) | |
| Number of outlets / pumping max. | 12 – 24 – 35 | |
| Output connection (pumping outlet) | Push-in Ø4 | |
| Nominal output per pump element | 0,02cc/strokes – RED (1 notch) 0,03 cc/ strokes – GREEN (2 notches) 0,04 cc/ strokes – YELLOW (3 notches) 0,08 cc/ strokes – BLUE (4 notches) 0,10 cc/ strokes – GREY (5 notches) 0,13 cc/ strokes – BLACK (6 notches) | |
| Max pressure achievable at the outlet of the pumping | 80 bar | |
| Reservoir Capacity (standard version) | Standard 2 L (0.53 US gallons- 0,44 UK Gallons) | |
| Grease capability | NLGI00 ÷ NLGI2 | |
| Operating temperature | -10°C ÷ +60°C (14°F ÷ 140°F) | |
| Storage temperature | -20°C ÷ +80°C (-4°F ÷ 176°F) | |
| Humidity | 90% | |
| Noise | < 70 db (A) | |
| Minimum level signalling/counting revolution | With Hall effect sensor | |

CONTROL PANEL CHARACTERISTICS

| | |
|---------------------------------|--|
| Working voltages | 12VDC – 24VDC |
| Operating temperature | -10°C ÷ +60°C (14°F ÷ 140°F) |
| Storage temperature | -20°C ÷ +80°C (-4°F ÷ 176°F) |
| Hardware characteristics | <ul style="list-style-type: none"> • Motor Overload protection • Input power protection • Remote Alarm signal • Completed Cycle control sensor |
| Relay alarm contact | NC (open in alarm) – I max 5A - Vmax 250V – Pmax 60W |

POLIPUMP DESIGN WORKSHEET

1. SELECT THE PUMP – Pick a model:

| | | | | | |
|---|-------|---------------------|---------|-----------------------|-------|
| Standard PoliPUMP (includes external alarm relay connection) | 12VDC | FROM1TO12 PUMPINGS | 0888270 | <input type="radio"/> | _____ |
| | | FROM1TO24 PUMPINGS | 0888271 | <input type="radio"/> | _____ |
| | | FROM1TO35 PUMPINGS | 0888272 | <input type="radio"/> | _____ |
| | 24VDC | FROM1TO12 PUMPINGS | 0888273 | <input type="radio"/> | _____ |
| | | FROM1TO24 PUMPINGS | 0888274 | <input type="radio"/> | _____ |
| | | FROM1 TO35 PUMPINGS | 0888275 | <input type="radio"/> | _____ |

2. HOW MANY PUMP ELEMENTS DO YOU NEED?

| PUMP ELEMENTS | | | | Q.TY |
|---------------------|--------------------|---------|-----------------------|-------|
| 0,02cc/ stroke | RED - (1 notch) | 0888451 | <input type="radio"/> | _____ |
| 0,03cc/ stroke | GREEN- (2notchs) | 0888452 | <input type="radio"/> | _____ |
| 0,04cc/ stroke | YELLOW- (3 notchs) | 0888453 | <input type="radio"/> | _____ |
| 0,08cc/ stroke | BLUE- (4notchs) | 0888454 | <input type="radio"/> | _____ |
| 0,10cc/ stroke | GREY- (5notchs) | 0888455 | <input type="radio"/> | _____ |
| 0,13cc/ stroke | BLACK- (6 notchs) | 0888456 | <input type="radio"/> | _____ |
| SPARE BLANKING PLUG | | 0888257 | <input type="radio"/> | _____ |



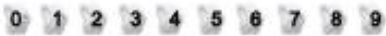
3. TUBES AND FITTINGS?

| TUBES Ø4 | | | | | Q.TY |
|---|-------------|--------------------|---------|-----------------------|-------|
| Ø4x2 Nylon tube | | Nylon Tube - Clear | 5717218 | <input type="radio"/> | _____ |
| Ø4x3 Nylon Tube (low pressure) | | | 5717300 | <input type="radio"/> | _____ |
| Ø4x2 Nylon Tube - Black | | | 5717258 | <input type="radio"/> | _____ |
| Ø4x2 Nylon Tube - Black grease filled NLGI 00 | | | 5717259 | <input type="radio"/> | _____ |
| FITTINGS Ø4 | | | | | |
| PUSH-IN | THREAD | MAX PRESSURE (bar) | | | |
| Straight | 1/8 BSP | 65 | 3084577 | <input type="radio"/> | _____ |
| | M6X1 | 65 | 3084579 | <input type="radio"/> | _____ |
| | M6X0,75 | 65 | 3084631 | <input type="radio"/> | _____ |
| | 5/16-24 UMF | 65 | 3084682 | <input type="radio"/> | _____ |
| | 1/8" NPT | 20 | 3084586 | <input type="radio"/> | _____ |
| 90° swivel | M6X1 | 65 | 3084613 | <input type="radio"/> | _____ |
| | 5/16-24 UMF | 65 | 3084611 | <input type="radio"/> | _____ |
| | 1/8NPT | 65 | 3084620 | <input type="radio"/> | _____ |
| | 1/8 BSP | 65 | 3084638 | <input type="radio"/> | _____ |
| | M8X1 | 150 | 3084731 | <input type="radio"/> | _____ |
| | 1/8 BSP | 150 | 3084696 | <input type="radio"/> | _____ |
| Compression | 1/8" BSP | 150 | 0092069 | <input type="radio"/> | _____ |

4. FILL THE PUMP

| | | | |
|--|---------|-----------------------|-------|
| Loading kit for 400 cc cartridge | 0888038 | <input type="radio"/> | _____ |
| Loading kit for 400 cc cartridge with valves | 3133723 | <input type="radio"/> | _____ |
| 400 cc grease cartridge (NLGI 2) | 1524952 | <input type="radio"/> | _____ |
| Fitting for 90° loading M22x1.5 | 3077222 | <input type="radio"/> | _____ |

ACCESSORIES

| | | | | |
|---|--|------------|-----------------------|-------|
| Black ties wraps 100 x 2,5 mm (1 unit) |  | UE-CACA011 | <input type="radio"/> | _____ |
| Spiral fits- black 10 m per coil ø 10-50 mm |  | UE-CACA030 | <input type="radio"/> | _____ |
| Tag kit |  | 3133901 | <input type="radio"/> | _____ |

Distributor Info: