



INJECTOR DL 32 OIL

CHARACTERISTICS

– **EXTERNALLY ADJUSTABLE FLOW:**

MIN
0.02 cm³
(0.001 cu.in.)

MAX
0.13 cm³
(0.003 cu.in.)

– **PRESSURES:**

MIN
52 BAR
(760 PSI.)

MAX
69 bar
(1000 psi)

– **USABLE LUBRICANT:**

MIN. OIL 32 cSt

Injector DL – 32 OIL

The DL-32 OIL injector was designed to provide lubricant on the friction points through the feed line pressure.

To facilitate flow rate adjustment, the numbers 1 to 4 are on the adjustment nut, which correspond to one turn. Each turn corresponds to 0.026 cm³ (0.016 cu.in.).

The flow rate is adjustable externally in order to allow regulation of the needed quantity of lubricant.

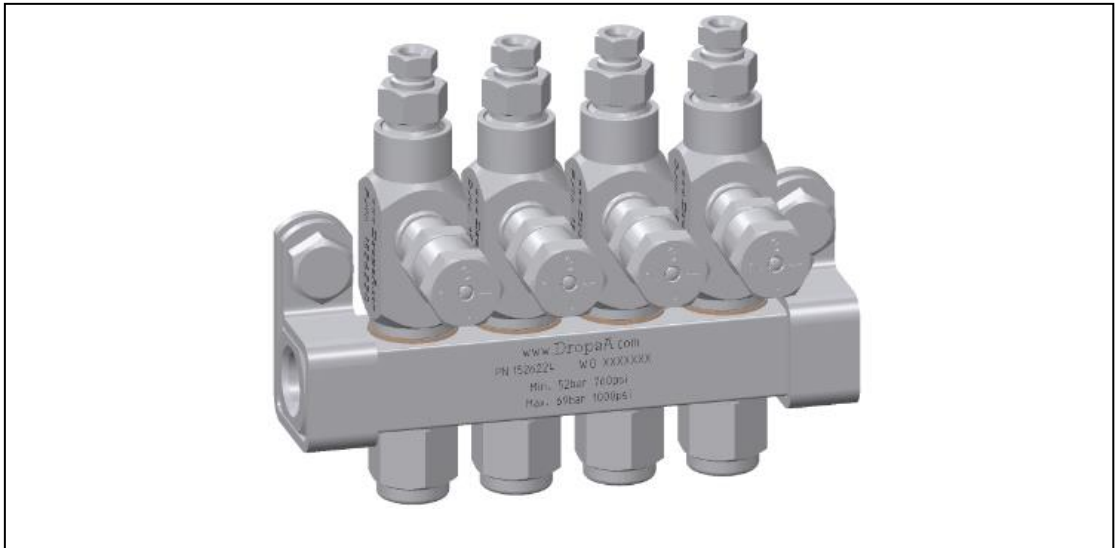
These injectors have a built-in visual indicator to check their operation. They are available with one to four outlets. Each injector mounted on the manifold can be easily replaced or inspected without removing the assembly and without intervening on fittings and piping.



They can be installed in any position and can be used with other types of injectors, should this be necessary. They are also interchangeable with components in the reference market.

APPLICATIONS

- WIND TURBINES
- BRIDGE CRANES
- TOOL MACHINES
- CANNING INDUSTRY
- GLASS INDUSTRY



ADVANTAGES

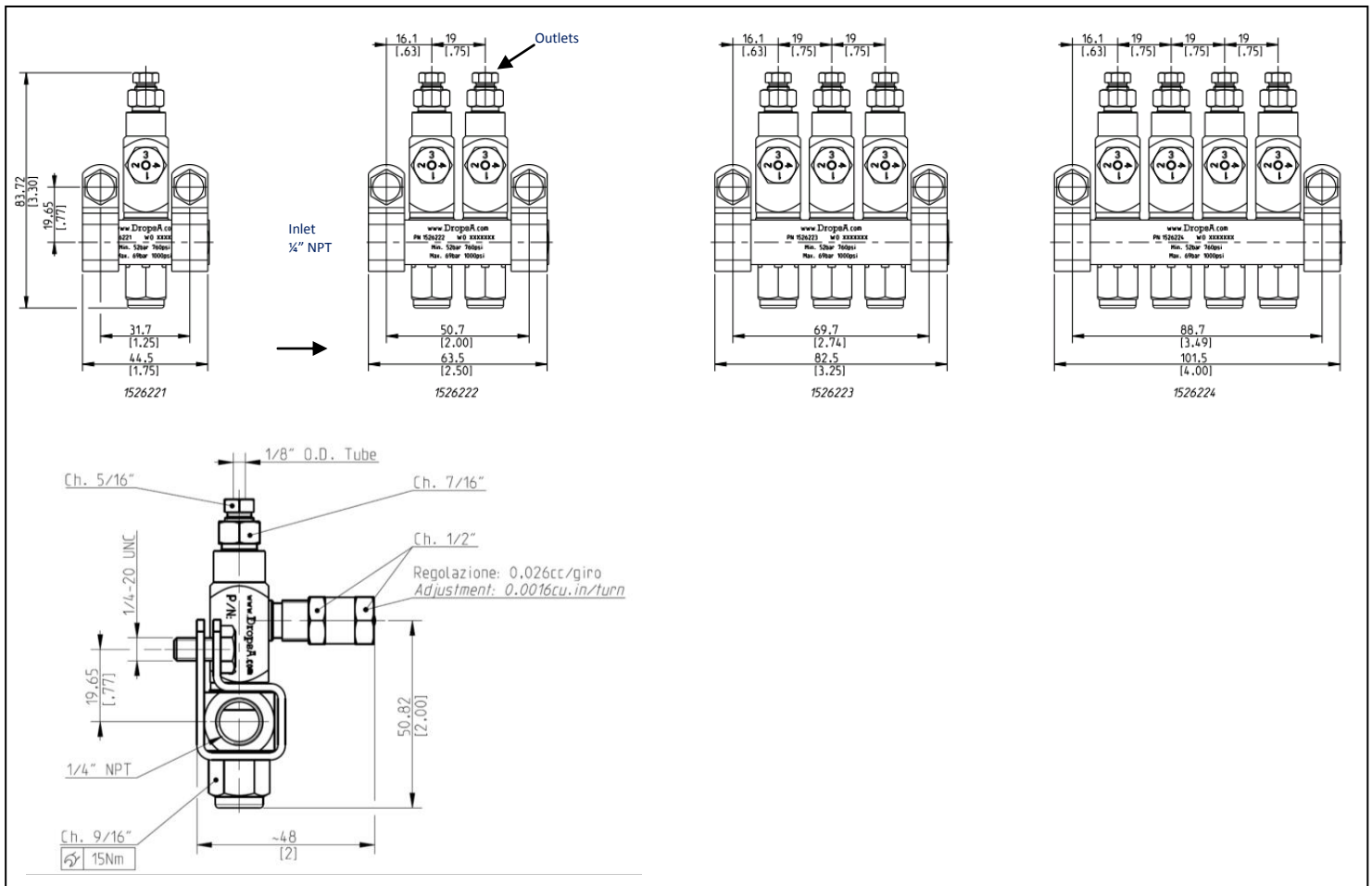
- INTERCHANGEABILITY
- MODULARITY
- EASY IMPLEMENTATION OF THE SYSTEM

TECHNICAL CHARACTERISTICS

TECHNICAL CHARACTERISTICS						
Usable lubricant	Flow rate		Operating pressure			
	Oil	Min	Max	Min	Max	typical
Min 32 cSt	0.02 cm ³ (0.001 cu.in.)	0.13 cm ³ (0.008 cu.in.)	52 bar (760 psi)	69 bar (1000 psi)	59 bar (860 psi)	10 bar (145 psi)

Adjustment 0.026 cm³ (0.016 cu.in) per turn with a maximum of 5 turns.

DIMENSIONS



ORDER INFORMATION

INJECTOR FOR OIL			
Part number	Outlets	DIMENSIONS IN mm [in]	
		A	B
1526221	1	44.5 – [1.75]	31.7 – [1.25]
1526222	2	63.5 – [2.5]	50.7 – [2]
1526223	3	82.5 – [3.24]	69.7 – [2.74]
1526224	4	101.5 – [4]	88.7 – [3.5]

SPARE PARTS	
1526220	Injector valve 1/8"
1524525	Bracket
1524545	Fixing screw

Notes:

1. The injectors include the compression nut and ring for Ø 1/8" pipe.
2. The injectors have NBR gaskets (max. 90°C – 194°F). Check the compatibility with the use of synthetic lubricant.
3. For injectors with manifold, two assembly clips are included with relative 1/4" 20 UNC screws.
4. With the indicator head tightened, the outlet is 0.02 cm³ (0.0012 cu in).



Distributor info: