



CHARACTERISTICS

Max pressure:
- 60 bar (870 psi)

Pressure Ratio:
- P2=9,5x(P1-0,67)

Ambient temperature:
- from 32 to 176 °F

Range of viscosity:
- From 50 to 750 mm²/s, NLGI 000-0

IDEAL FOR

- Daily or up to each minute fluid grease or oil lubrication

- For usage with dosing elements or metering valves

APPLICATIONS

- Small machines

- Single point lubrication with oil or fluid grease

- Machine tools, packaging machinery, general engineering

AM SINGLE PISTON PUMP (capacitive level control)

The single piston pump AM is a robust pneumatic pump. It is suitable for automatic lubrications, which must be done several times daily to maximum once per minute. The capacitive level control offers a reliable use of fluid greases, which are difficult to detect.

TECHNICAL INFORMATION

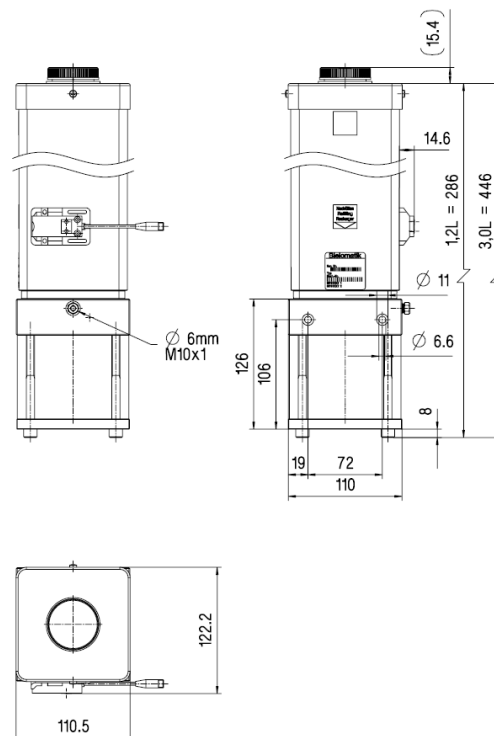
General

Type	Single piston pump
Lubrication line connection	M10 x 1 or Pipe Ø6
Ambient temperature	From 32 to 176 °F (from 0 to 80 °C)
Filling	manual
Protection class as per EN60529	IP 67

Hydraulic system

Max. pressure	60 bar (870 psi)
Pressure Ratio	P2=9,5x(P1-0,67)
Flow rate	25 mm ³ /stroke
Operating medium	Mineral oil, fluid grease
Range of viscosity	From 50 to 750 mm ² /s, NLGI 000-0*

*as per fluid grease release list



Drive

Type of drive	pneumatic
Supply pressure	From 4 to 6 bar
Supply fitting	G ¼

Level control

Nominal voltage	24 V DC
Power consumption	≤ 17 mA
Switching current	≤ 100 mA
Connection	M8 x 1
	1 – L+ 3 – L- 4 – NC (Open when tank empty)

AM (CAPACITIVE LEVEL CONTROL) SINGLE PISTON PUMP



bielomatik
SCHMIERTECHNIK
DropsA

Ordering Information

Tank	Lubrication line connection	Level-switch	Strainer	Filling-nipple	pRev	Other	Ordering-number
1,2L	M10x1, left	Left	No	No	0,5 bar		P30011629
		Left	No	No	0,5 bar	With M4 Thread for valve	P30011647
	∅6 mm, left	Left	Yes	No	0,5 bar		P30011634
	∅6 mm, right	Left	Yes	No	0,5 bar	With screw cap	P30011637
		Right	Yes	No	0,5 bar		P30011649
3,0L	∅6 mm, left	Left	Yes	No	0,5 bar		P30011639
	∅6 mm, right	Right	Yes	No	1,5 bar	With screw cap	P30011642
					0,5 bar	FESTO connector for air inlet	P30011643

Spare Parts

Ordering Number	Designation	Application
P30400600	Cap	Tank Cap
P30215201	Double taper ring	Lubrication line connection
P30256621	Union nut	Lubrication line connection

Accessories

Ordering number	Designation	Application
P62004053	Fixing screw	Fixing of pump
P62050004	Washer	Fixing of pump
P30023403	3/2 way valve - 24 VDC, 3 W	Pneumatic supply
P30023404	3/2 way valve - 230 VAC, 6,5 W	Pneumatic supply
P67660403	Plug in connector cable	Connect level sensor

CB2335PE WK 20/20

DropsABielomatikSchmiertechnikGmbH products can be purchased at DropsABielomatikSchmiertechnik GmbH branches and authorised distributors. Write to info@bielomatik-lubrication.de

Distributor Info:

www.bielomatik-lubrication.de
www.dropsa.com