

PNEUMATIC PUMP FOR GREASE

Pneumatic pump 1524344 series

User and Maintenance Manual

Warranty information

CONTENUTI

1. GENERAL DESCRIPTION
2. DIMENSIONS, SIZE, TECHNICAL SPECIFICATIONS
3. INSTALLATION
4. DESCRIPTION OF OPERATION
5. PRINCIPAL COMPONENTS
6. ORDERING INFORMATIONS AND DIMENSIONS
7. PROTECTION AND RECOMMENDATIONS
8. GARANZIA
9. DICHIARAZIONE DI CONFORMITA'
10. DISTRIBUTORS



Manuale redatto in conformità alla Direttiva
CE 98/37

C2025II - WK 23/02

1. GENERAL DESCRIPTION

A compressed air pneumatically operated pumping system for greasing.

2. DIMENSIONS, SIZE, TECHNICAL SPECIFICATIONS

The following table gives the technical data relative to the machine referred to in this manual.

TECHNICAL DATA for GREASE PUMP:

Part N°	1524344
noise level	DB 70
compression ratio	50:1
max. grease delivery pressure	Bar 400
pressure utilised min./max.	Bar 4-8
flow rate	g/min. 700
pump element rod length	Cm 45
pump element external diam.	Mm 28
drum	Kg 20

3. INSTALLATION

1. Position the grease drum on the trolley after having secured the base of the trolley to the column by means of the sliding housing;
2. insert the grease pressure disk into the drum and close the drum by means of the lid, sliding it down the column after having removed the handle (if necessary);
3. tighten the lid by means of the handles, ensuring the lid and the drum are centred;
4. pass the pump element through the holes in the lid and the grease pressure disk;
5. clamp the pump to the lid by means of the handle;
6. connect the grease outlet tube;
7. connect the air supply tube and regulate the inlet pressure using one of the following devices:
 - PRESSURE REDUCER; necessary where one is not provided on the compressed air system being used. Suitable for non-continuous use.
 - PRESSURE REDUCER with a CONDENSATE SEPARATOR and 50 micron active carbon filter; indispensable with all types of continuous use pumps (over ten minutes), to avoid the formation of condensate which could cause blocking of the pump
 - PRESSURE REDUCER with a CONDENSATE SEPARATOR and LUBRICATOR and 50 micron active carbon filter, suitable for fixed systems.

N.B. The regulation range is from a minimum of 4 to a maximum of 8 bar

4. DESCRIPTION OF OPERATION

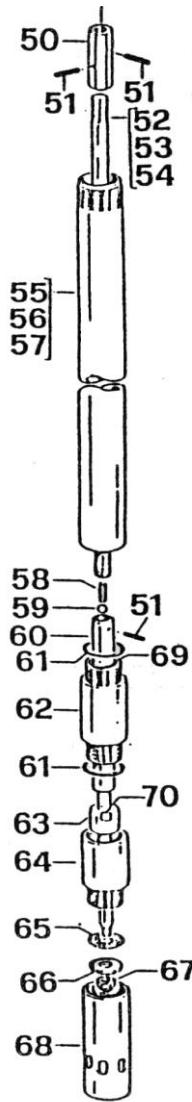
Once the pump has been fitted to the drum and after having connected the tubes complete with distribution gun, the pump can be operated as in the following procedure.

These are simple operations which, in studying the design of the machine, and more particularly, the grease and oil lines, have taken into consideration the ways that operators carry out these tasks during the various phases of lubrication and greasing, topping up with oil, etc.

- Opening the compressed air valve starts the pump operating and the oil/grease delivery tube is subjected to pressure up until reaching the set regulation value. Once this value is reached the pump stops.
- Actuating the oil/grease delivery gun results in the delivery of the product, causing a lowering of the pressure and, consequently, the pump starts functioning again to return to the set pressure value.

5. PRINCIPAL COMPONENTS AND REPLACEMENT PARTS

- GREASE DIP TUBE**

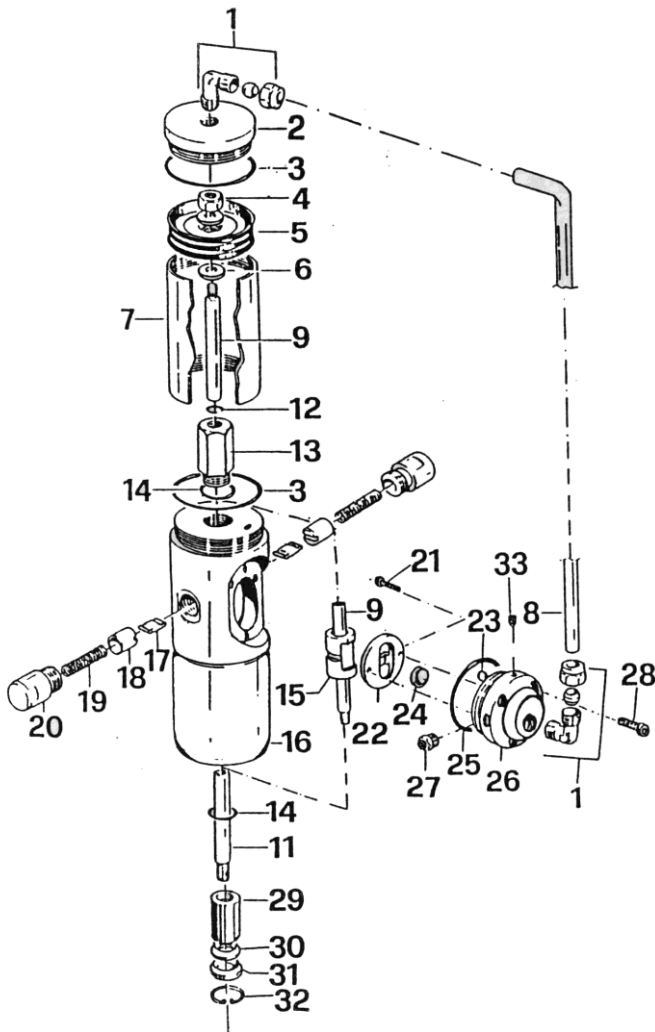


POS.	QT.	DESCRIPTION
50	1	Nut, connecting
51	3	Pin, spring Ø 4 mm.
52	1	Rod, drive 480 mm.
53	1	Rod, drive 740 mm.
54	1	Rod, drive 940 mm.
55	1	Extension 480 mm.
56	1	Extension 740 mm.
57	1	Extension 940 mm.
58	1	Spring, By-pass
59	1	Ball, By-pass
60	1	Piston, pump element
61	2	O-ring 3075
62	1	Cylinder
63	1	Valve
64	1	Housing, valve
65	1	Filter
66	1	Washer, pressure disk
67	1	Nut
68	1	Tube, dip
69	1	O-ring 3056
70	1	O-ring 3037

DISASSEMBLY OF GREASE DIP TUBE

Clamp the pump element in a vice with soft metal jaws: the position for clamping must be the valve housing (64). Using a 10 mm bar, unscrew the end part of the dip tube (68). Remove from the vice, clamp the dip tube and remove it from the motor. Using, simultaneously, a 10 mm spanner unscrew nut (67). Extract the pump element (52) or (53) or (54) depending on the model of pump. Carefully clean all the parts.

MOTOR BODY



POS.	QT.	DESCRIPTION
1	2	Elbow 1/8 X 8
2	1	Plug, cylinder, Ø 65mm.
3	2	O-Ring 3225
4	1	Nut M10
5	1	Piston
6	2	Washer, piston
7	1	Cylinder, motor Ø 65mm.
8	1	Tube, recirculation
9	1	Spindle, upper
11	1	Spindle, lower
12	1	O-ring 115
13	1	Guide, spindle, upper
14	2	O-ring 3075
15	1	Housing, exchanger
16	1	Housing, motor
17	2	Plate, inverter
18	2	Cylinder
19	2	Spring
20	2	Plug, housing, spring
21	2	Screw M 4
22	1	Fork
23	1	O-ring 2018
24	1	Plate, inverter
25	1	O-ring 2125
26	1	Housing, exchanger
27	1	Silencer
28	1	Screw M 5
29	1	Bush, guide
30	1	Seal
31	1	Flange, closing
32	1	Snap ring ,Ø 24mm
33	1	Grub screw M5

OVERHAULING THE MOTOR ASSEMBLY

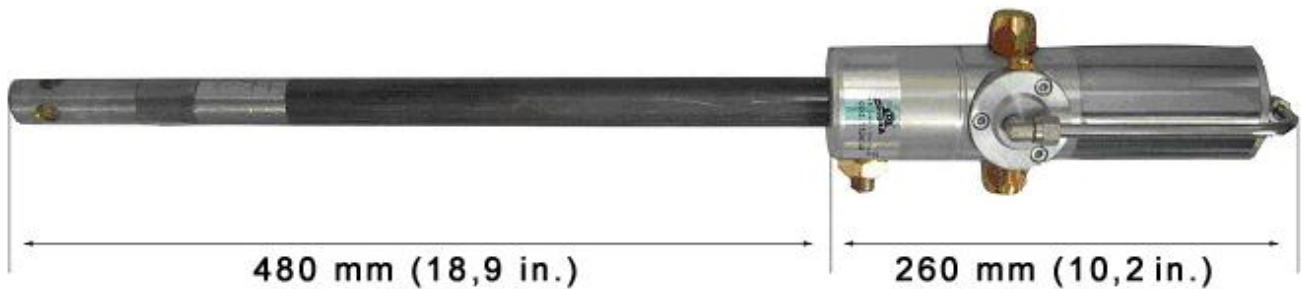
After having extracted the pump element as described above, clamp the motor housing (16) in a vice and extract the two spring pins (51) using an appropriate pin punch. Unscrew the connecting nut (59) and the dip tube complete. Unscrew the screws (28), the connectors (1) and remove the exchanger (26). Using a suitable pipe wrench, unscrew the cylinder (7) clamping it at the top at the level of the plug (2) and extract the cylinder. Remove the piston (5) by unscrewing nut (4). Check the state of wear of the cylinder and the piston. Remove the upper spindle guide (13). Remove the two inverter assemblies (20-19-18-17). Extract the spindle (9-11-15). Check the state of wear and the free movement of the housing (15). Remove the snap ring (32) and extract parts 31-30-29-14. Check the state of wear. Check the exchanger assembly. Unscrew the screws (21), remove the fork (22) and check the plate (24).

WARNING! When disassembling the motor, it is advisable to replace all the seals (see KIT). To reassemble the motor, follow the above directions in the reverse order.

6. ORDERING INFORMATIONS AND DIMENSIONS

Kit Code	Description
1524175	Kit for barrel pumps 20kg (44 lb) equipped with: pump-drum cover- grease gun -flex 1,5 mt. (59 in.)

Part N° Replacement parts	Description
3132484	PNEUMATIC PUMP RATIO 50:1
3132485	KIT, DIP TUBE (Fig. page 4, items: 50-70)
3132486	KIT, SEALS, DIP TUBE
3132487	KIT, HOUSING, MOTOR (Fig. page 4, items: 1,2,4-11,15-22,24,26-29,31,33)
3132488	KIT, SEALS, MOTOR (Fig. page 4, items: 3,12,14,23,25,30,32)



Gross Weight Kit 1524175: Kg. 8,2 (18 lb)

7. PROTECTION AND RECOMMENDATIONS

PRESSURE REGULATORS:

1. Must be equipped with safety valve.
2. The filter container must be protected against any bursting.

Do not tamper with the hydraulic-pneumatic circuit during operating phases and whenever there is pressure in the pump. Should it be necessary to intervene while the pump is under pressure, when there is a blockage for example, proceed as follows:

- a. close off the compressed air supply
- b. operate the delivery gun lever to ensure that any residual pressure is released
- c. intervene on the pump as detailed in the maintenance instructions

RECOMMENDATIONS:

During maintenance and during the operating of the pump, operators should make use of individual personal protective clothing, including gloves, safety glasses and overalls.

WARNING: IT IS FORBIDDEN TO USE THE PUMP FOR PUMPING AND TRANSPORTING INFLAMMABLE OR CORROSIVE LIQUIDS.

The noise produced by the pump during its functioning, when measured in accordance with the Machine Directive 89/392 CEE, is 75 dB, as the pump is equipped with a dissipative silencer fitted to the compressed air exhaust. Periodically check the efficiency of the silencer.

8. WARRANTY

All products manufactured and marketed by Dropsa are warranted to be free of defects in material or workmanship for a period of at least 12 months from date of delivery. Extended warranty coverage applies as follows:

Complete system installation by Dropsa: 24 Months

All other components: 12 months from date of installation; if installed 6 months or more after ship date, warranty shall be maximum of 18 months from ship date.

If a fault develops, notify us giving a complete description of the alleged malfunction. Include the part number(s), test record number where available (format xxxxx-xxxxx), date of delivery and installation and operating conditions of subject product(s). We will subsequently review this information and, at our option, supply you with either servicing data or shipping instruction and returned materials authorization (RMA) which will have instructions on how to prepare the product for return. Upon prepaid receipt of subject product to an authorized Dropsa Sales & Service location, we will then either repair or replace such product(s), at our option, and if determined to be a warranted defect, we will perform such necessary product repairs or replace such product(s) at our expense.

Dropsa reserves the right to charge an administration fee if the product(s) returned are found to be not defective.

This limited warranty does not cover any products, damages or injuries resulting from misuse, neglect, normal expected wear, chemically caused corrosion, improper installation or operation contrary to factory recommendation. Nor does it cover equipment that has been modified, tampered with or altered without authorization.

Consumables and perishable products are excluded from this or any other warranty.

No other extended liabilities are stated or implied and this warranty in no event covers incidental or consequential damages, injuries or costs resulting from any such defective product(s).

The use of Dropsa product(s) implies the acceptance of our warranty conditions. Modifications to our standard warranty must be in writing and approved by Dropsa.


9. CE DECLARATION OF CONFORMITY

Manufacturer: DROPSA SpA Company Via Croce, 1 - 20090 Vimodrone (MI), Italy Address +39 02 250791 Telephone
--


It is certified that:

The machine: Pneumatically driven pump: 1524344 series
--

- * is manufactured in conformity with the DIRECTIVE OF THE COUNCIL OF THE EUROPEAN COMMUNITY concerning the harmonisation of member states legislation relative to machines (98/37 CE + 91/368/CEE), EMC (89/336/CEE) and BT (73/23/CEE) and relative amendments.
- * is manufactured in accordance with the following standards and harmonised technical specifications:
EN 292/1, EN 292/2, EN 50081-2, EN 50082-2, CEI EN 60204-1, EN 1050.


Technical Manager	Ing. Walter Divisi
Product Manager	Name
DROPSA SpA - Vimodrone (MI) - Italy	
Company	
	January 2000
Signature	Date

17. DISTRIBUTORS

 **Dropsa S.p.A.**
Via B. Croce,1
20090 Vimodrone (MI) Italy.
Tel: (+39) 02 - 250.79.1
Fax: (+39) 02 - 250.79.767
E-mail: sales@dropsa.it (Export)
E-mail: vendite@dropsa.it (National)

 **Dropsa (UK) Ltd**
Unit 6, Egham Business Village,
Egham, Surrey, TW20 8RB
Tel: (+44) 01784 - 431177
Fax: (+44) 01784 - 438598
E-mail: salesuk@dropsa.com

 **Dropsa USA Inc.**
6645 Burroughs Ave
48314-2132 Srerling Hts, Mi Us -USA
Tel: (+1) 586-566-1540
Fax: (+1) 586-566-1541
E-mail: salesusa@dropsa.com

 **Dropsa GmbH**
Volmerswerther Strasse 80
40221 Dusseldorf 1, Deutschland
Tel: (+49) 0211/39 4011
Fax: (+49) 0211/39 4013
E-mail: sales@dropsa.de

 **Dropsa Ame**
23, Av.des.Morillons
Z.I. des Doucettes 91140
Garges Les Gonesse, France
Tel: (+33) 01 39 93 00 33
Fax: (+33) 01 39 86 26 36
E-mail: salesfr@dropsa.com

 **Dropsa do Brazil Ind. E Com. Ltda**
Rua Sobralia 175,
Sao Paulo, Brazil
Tel: (+55) 011-5631-0007
Fax: (+55) 011-5631-9408
E-mail: salesbr@dropsa.com

 **Dropsa Lubrication Systems**
Nr 8 Dongxing Road,
Songjiang Industrial Zone
(Shanghai) Co., Ltd
Tel: +86 (021) 67740275
Fax: +86 (021) 67740205
E-mail: china@dropsa.com

 **Dropsa Australia Pty.**
C20/148 Old Pittwater Road
Brookvale, NSW 2100
Tel: +61 (02) 9938 6644
Fax: +61 (02) 99 386 611
E-mail: salesau@dropsa.com



Web site: <http://www.dropsa.com> - E-mail: sales@dropsa.com