

## CHARACTERISTICS

- OPERATING MODES: CYCLE AND PULSE
- INTEGRATED LCD, ALL OPERATING VALUES SET BY SIMPLE MENU PARAMETERS
- COMPLETE CONTROL AND PROFILING OF HOW STAND BY AND LUBRICATION OCCURS
- CONNECTION FOR REMOTE MONITORING OF PUMP OPERATION
- AUTO-FILL PUMP CONTROL FUNCTION (AUTOMATIC CHARGE)

## CONTROLLER WITH REMOTE MANAGEMENT ALREADY SET, SUITABLE FOR SMALL AND MEDIUM LUBRICATION SYSTEMS

### EFFICIENT AND FLEXIBLE

VIP5<sub>pro</sub> is the advanced and most complete version of the VIP5 controller line, designed specifically for the Dual Line systems management, with 3phase voltage supplied.

Dual Line systems can be controlled and monitored by VIP5<sub>pro</sub>. Capable of handling 3phase voltage supplied for use high-end pump station with thermal switch gear.

The extensive set of parameters offers unrivalled ease and flexibility for controlling and monitoring your automatic lubrication system.

This innovative controller device embodies many unique features.



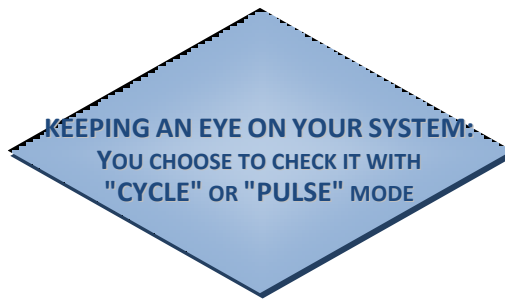
THE VIP5<sub>Pro</sub> IS EQUIPPED WITH ALL ESSENTIAL FUNCTIONS BEFORE PRESENT IN DIFFERENT TYPES OF CONTROL DEVICES

## APPLICATIONS

- DUAL LINE SYSTEM: IDEAL WITH SUMO PUMPS
- SIMPLE ON/OFF LUBRICATION SYSTEMS
- SIMPLE FLOW DISPLAY AND MONITORING SYSTEM

## MANY NEW FEATURES

- AUTO-FILL PUMP CONTROL FUNCTION (AUTOMATIC CHARGE)
- CONTROL FOR SOLENOID VALVE AIR NOZZLE FLUSHING AT THE END OF LUBRICATION CYCLES IN SPRAY SYSTEMS
- LOCAL AND REMOTE MODE WITH REMOTE CYCLE START
- REMOTE REPORTING OF PUMP OPERATING
- REMOTE ALARM RESET



## CYCLE MODE

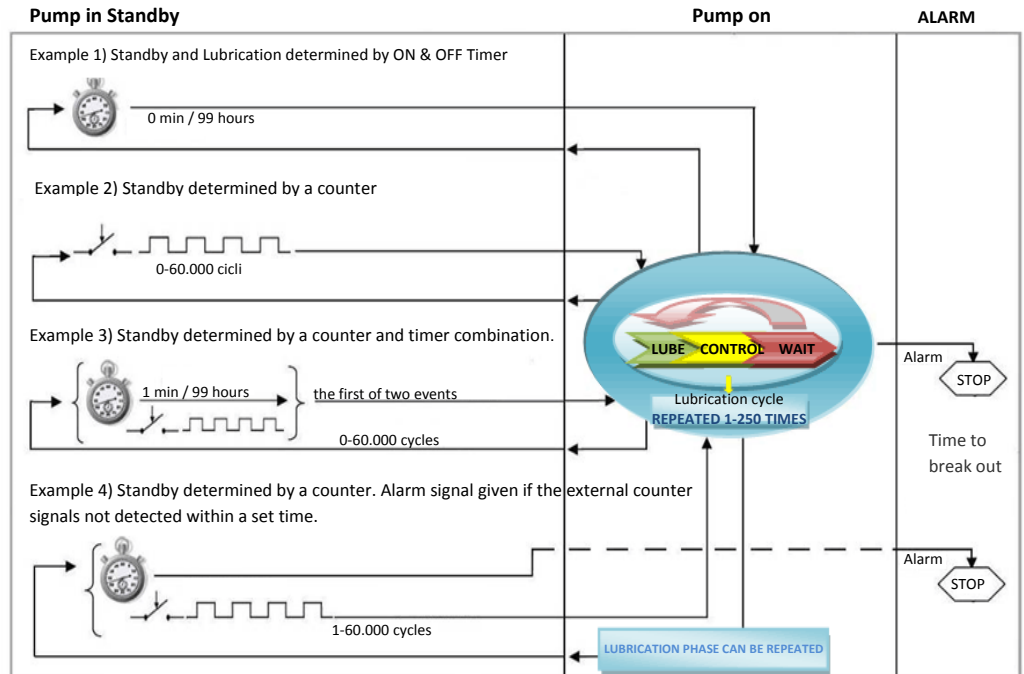
This “conventional” operating mode allows the lubrication system to run or be on standby.

Cycle can be:

- With a setting time;
- With an external signal;
- With a setting time in combination with an external signal.

When using a combined mode you can decide if the timer should initiate a Lubrication cycle or flag an alarm condition because no signal has been detected within the timeout.

## EXAMPLE

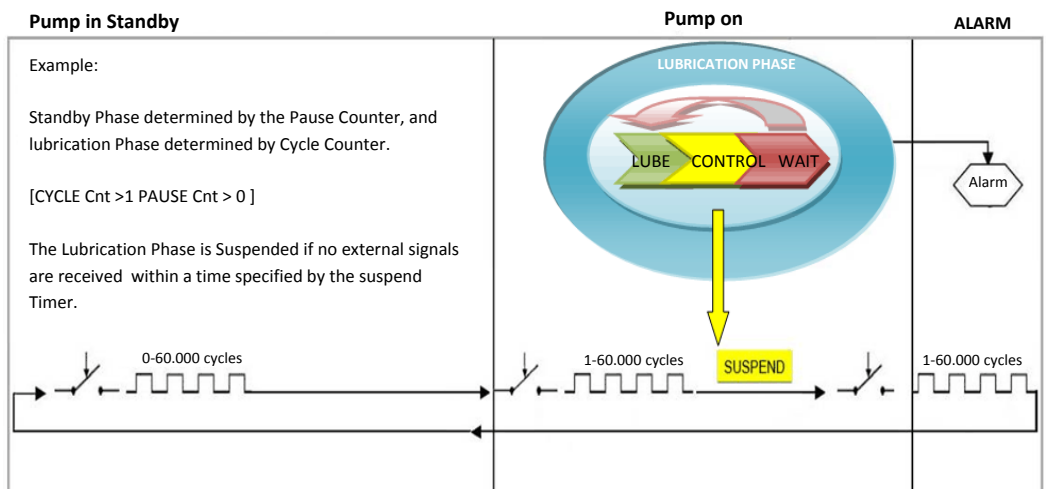


## PULSE MODE

This operating mode allows the external signal to drive both the Standby and Lubrication Phase whilst allowing you to connect your cycle or pressure switch to monitor that your system is operating correctly for the entire duration of the Lubrication Phase. A Suspend Timer function allows the system to suspend the lubrication phase if the driving external signal ceases.

This operating mode is ideal for chain or conveyor lubrication where the amount of lubrication is determined by the movement of the conveyor, yet the correct output of lubricant is determined by a cycle or pressure switch connected to the metering devices.

## EXAMPLE



## DUAL LINE

THERMAL CONTROL PROTECTION AND ERROR WARNING

MAX-LEVEL CONTROL

SEPARATE REMOTE OUTPUT SIGNALLING FOR MINIMUM LEVEL ALARM AND GENERAL ALARM CONDITIONS

4-20 mA CONTINUOUS INPUT LEVEL MONITORING

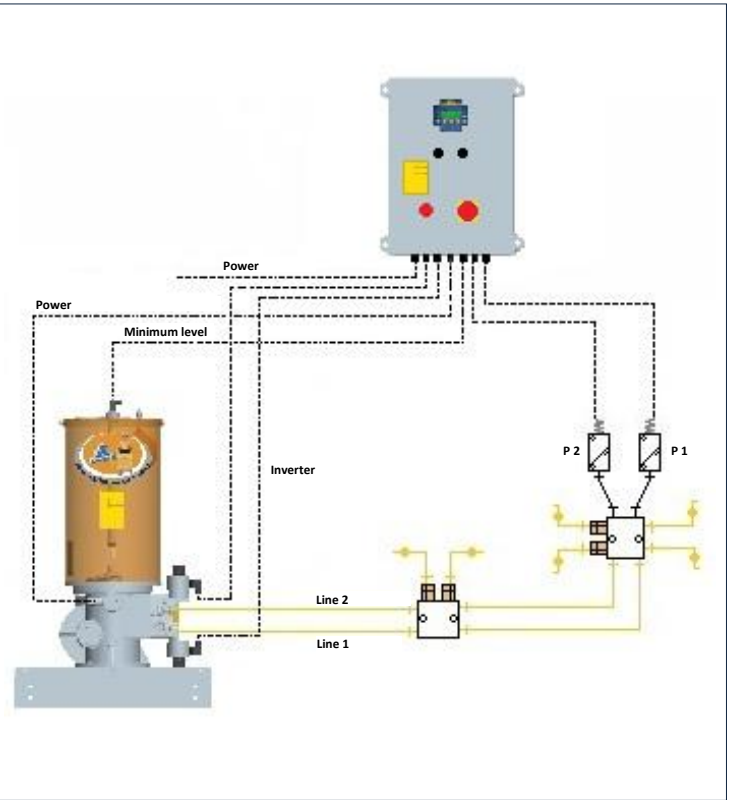
ABILITY TO CONTROL LINE INVERTER VALVES FOR DUAL LINE SYSTEMS WITH PNEUMATIC OR ELECTROMAGNETIC ACTUATORS

ABILITY TO POWER INPUT AND OUTPUT CIRCUITS USING DIFFERENT POWER SOURCES

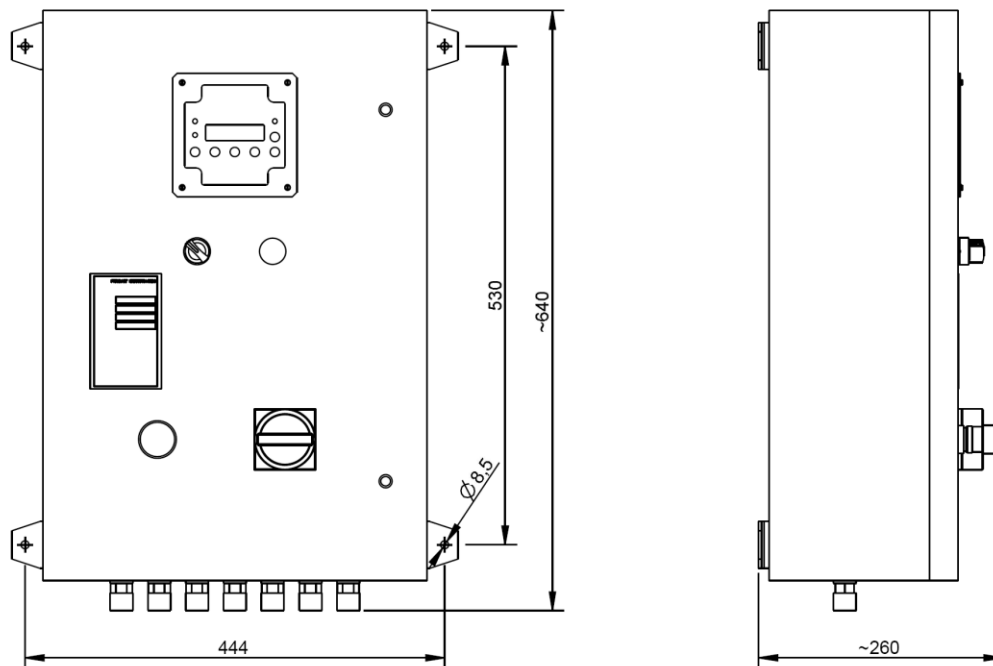
ABILITY TO ISOLATE THE VOLTAGE OF THE INVERTER VALVE POWER CIRCUIT FROM THE MAIN POWER FRAMEWORK

ABILITY TO POWER INPUT AND OUTPUT CIRCUITS USING DIFFERENT POWER SOURCES

## EXAMPLE OF APPLICATION WITH SUMO PUMP



## OVERALL DIMENSIONS (NOT TO SCALE)



## CONTACTS

[www.dropsa.com](http://www.dropsa.com)

[sales@dropsa.com](mailto:sales@dropsa.com)

### ITALIA

Dropsa SpA  
t. +39 02-250791  
f.+39 02-25079767

### U.K.

Dropsa (UK) Ltd  
t. +44 (0)1784-431177  
f. +44 (0)1784-438598

### GERMANY

Dropsa GmbH  
t. +49 (0)211-394-011  
f. +49 (0)211-394-013

### FRANCE

Dropsa Ame  
t. +33 (0)1-3993-0033  
f. +33 (0)1-3986-2636

### CHINA

Dropsa Lubrication Systems  
(Shanghai) Co., Ltd  
t. +86 (021) 67740275  
f. +86 (021) 67740205

### U.S.A.

Dropsa Corporation  
t. +1 586-566-1540  
f. +1 586-566-1541

### AUSTRALIA

Dropsa Australia Ltd.  
t. +61 (02)-9938-6644  
f. +61 (0)2-9938-6611

### BRAZIL

Dropsa Remonlub  
t. +55 (0)11-563-10007  
f. +55 (0)11-563-19408

## TECHNICAL SPECIFICATIONS

TECHNICAL CHARACTERISTICS	
Supply Voltage	110V~ - 230V~ - 400V~ - 460V~
Power Consumption	2 W (In Stop) - 10 W (In Start)
Operating Temperature	- 5 °C ÷ + 70 °C
Storage Temperature	- 20°C ÷ + 80 °C
Operating Humidity	90% max
Frequency	50/60 Hz

## ORDERING INFORMATION

AVAILABLE VERSIONS		
DESCRIPTION	VERSIONS	CODE
VIP5 "Pro" (Power supply 110V~ - Inverter 24V~ DC)	A	1639211 (Standard) VIP5"Pro"
VIP5 "Pro" (Power supply 230V~ - Inverter 24V~ DC)	B	
VIP5 "Pro" (Power supply 460V~ - Inverter 24V~ DC)	C	
VIP5 "Pro" (Power supply 110V~ - Inverter 110V~)	D	
VIP5 "Pro" (Power supply 230V~ - Inverter 230V~)	E	

## VIP5 CHARACTERISTICS COMPARISON

	 VIP5	 VIP5 <sub>plus</sub>	 VIP5 <sub>PRO</sub>	 VIP5 <sub>PRO</sub> ATEX
SINGLE PHASE SUPPLY	✓	✓	✓	✓
THREE PHASE SUPPLY	✗	✓	✓	✓
EMERGENCY BUTTON	✗	✓	✓	✓
GENERAL SWITCH	✗	✓	✓	✓
SWITCH LOCK-DOOR	✗	✗	✓	✗
SUPPORT ADDITIONAL TERMINAL BOARD	✗	✓	✓	✓
CONTROL AND COMMAND OF DUAL LINE SYSTEM WITH HYDRAULIC INVERTER	✓	✓	✓	✓
CONTACTS POWER OF REVERSE CONTROL (ELECTROMAGNETIC AND ELECTRO-PNEUMATIC INVERTER)	✗	✓	✓	✓
PAINTED STEEL IP55 BOX	✗	✓	✓	✓
MINIMUM LEVEL CONTROL	✓	✓	✓	✓
MAXIMUM LEVEL CONTROL	✗	✓	✓	✓
THERMAL PROTECTION CONTROL	✗	✓	✓	✓
REMOTE ALARM FREE CONTACT	✗	✗	✓	✓
LOCAL/REMOTE SELECTOR (WITH REMOTE START AND RESET)	✗	✗	✓	✓
PUMP-ON REMOTE CONTACT	✗	✗	✓	✓
DELAYED SWITCH OFF OF AIR SOLENOID	✗	✗	✓	✓
POSSIBILITY OF SEPARATE SUPPLY OF INLET AND OUTLET CIRCUITS	✗	✓	✓	✓
POSSIBILITY OF SEPARATE SUPPLY OF INVERTER	✗	✓	✓	✓